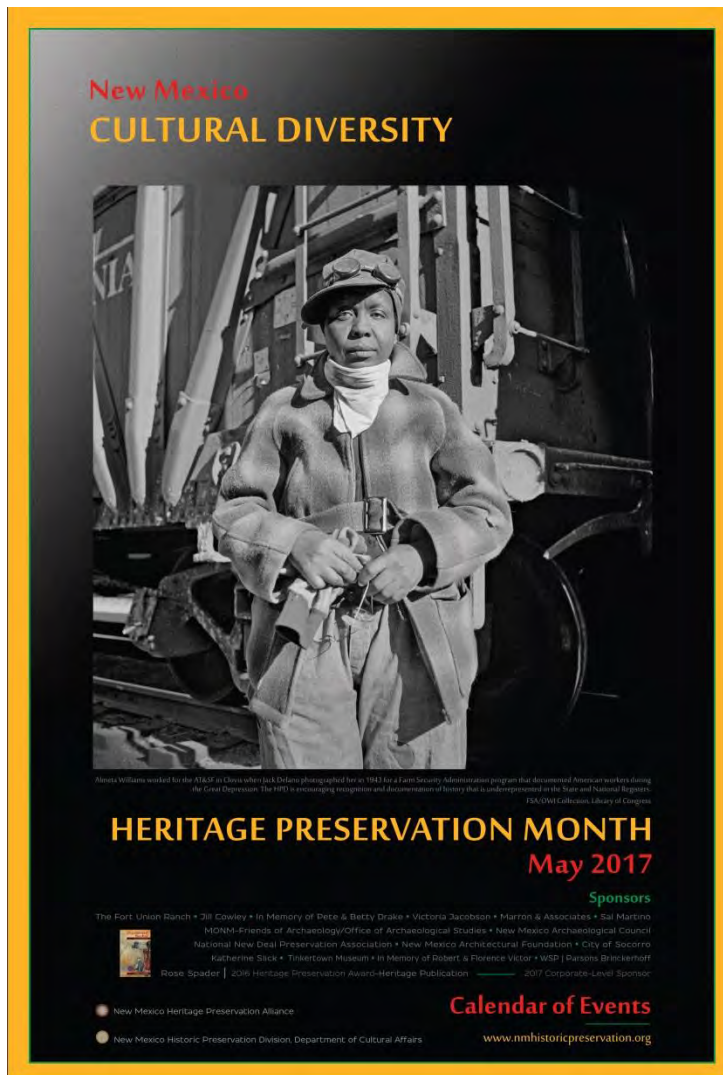


# Heritage Preservation Month 2017 | Calendar of Events

## *Cultural Diversity in New Mexico*



Almeta Williams worked for the AT&SF in Clovis in 1943 when Farm Security Administration photographer Jack Delano photographed her for a series of portraits of American workers during the Great Depression. Copies of the 30<sup>th</sup> annual heritage Preservation Month poster are available by contacting the New Mexico Historic Preservation Division.

The National Park Service is emphasizing cultural diversity with initiatives such as “Find Your Park,” a social media campaign to attract a broader population to national parks and draw attention to lesser known parks. In 2014, NPS began awarding grants to support survey, inventory and designation of properties associated with communities that are underrepresented in the National Register of Historic Places. Register nominations and landmark designations have followed nationwide that are associated with Native Americans, Asians, Hispanics, women, and the LGBTQ community.

At home, the New Mexico Historic Preservation Division received a 2014 NPS diversity grant that funded a tribal preservation symposium and the development of a digital app for surveying historic sites on tribal lands. Earlier this year, the Dunbar Elementary School in the tiny border town of Vado was listed in the State and National Registers in recognition of the school’s 100-year history in the only community settled by African Americans in New Mexico that still exists today. The nomination includes a fascinating history of African Americans in our state, and helped inspire the Cultural Diversity theme for this year’s Heritage Preservation Month poster.

This May during Heritage Preservation Month cities, towns, neighborhoods, tribes, pueblos, parks, museums, schools, and organizations were encouraged to host events that celebrate cultural diversity. You will find several of them in this year's Calendar, along with the events that have become community traditions and Preservation Month staples over the years. When attending events, please keep in mind New Mexico's unpredictable spring weather. It can be perfect in the morning, hot and windy and hot later in the day, and cold and wet later on. Archaeological hikes, tours, and other events require sturdy shoes or hiking boots. Dress in layers and don't forget to bring some sunscreen!

This year's calendar also features longstanding New Mexico traditions such as grape cultivation and wineries, a staple along the Camino Real. You'll also find details on the Santa Fe Century, the 100-mile bicycle tailored to northern New Mexico's varied terrain and climate.

The arts have long been celebrated in New Mexico. Works have been created for centuries by culturally diverse groups that include Native American, Hispanics, Anglos, Asians, Africans, Europeans and people how have made alternative cultural and lifestyle choices that are represented in their art and influenced by the Land of Enchantment, whether it be their temporary or permanent spiritual and creative home. Whether you interests lie in music and the arts, out-door adventures, history, geology, or hands-on activities for the whole family, you'll find something to do this Heritage Preservation Month that will remind you of just how diverse our local cultures truly are.

## Events

### Tinkertown Museum

**Sandia Park**

**9 A.M. – 6 P.M. Daily**

**Admission \$3.75; mention Historic**

**Preservation Month to receive 2 tickets for the price of 1 through the month of May!**

As creatively diverse as New Mexico itself, Tinkertown showcases artist Ross Ward's quirky genius. Follow the boardwalk through an animated miniature Western town and three-ring circus, surrounded by glass bottle walls. Named one of America's top ten small museums by Trip Advisor, this delightful folk are environment celebrates little-known stories of the past with humor and whimsy. Tinkertown is located on the Turquoise Trail National Scenic Byway (State Highway 536), 121 Sandia Crest Road. For information call 505 281-5233 or email [Carla@tinkertown.com](mailto:Carla@tinkertown.com); website: [www.tinkertown.com](http://www.tinkertown.com). Mailing address: PO Box 303, Sandia Park, NM 87047.



## Ranger-Guided Tour

**Fort Union National Monument  
Watrous, NM**

**10 A.M. Daily throughout May  
Free, no reservations required  
Park Entrance Fee may apply**

The history of Fort Union is a merger of cultures involving: 1) a predominantly Anglo US Army; 2) a largely Hispanic native population; 3) Apache tribes, Navajos, and Ute Indians defending their ancestral lands against the

spread of Anglo settlers, traders, and hunters; and 4) African American Buffalo Soldiers who served for several years at the fort. This ranger-guided tour will highlight the history and preservation efforts at the largest collection of 19<sup>th</sup> century adobe buildings in the nation. The monument is located north of Las Vegas, NM. Follow 1-25 to exit 366 (Watrous) and follow the Fort Union signs on State Road 161 for 8 miles to the fort. For further information call the park at 505-425-8025.



## Self-Guided Driving Tour of 24 Historic *Iglesias*

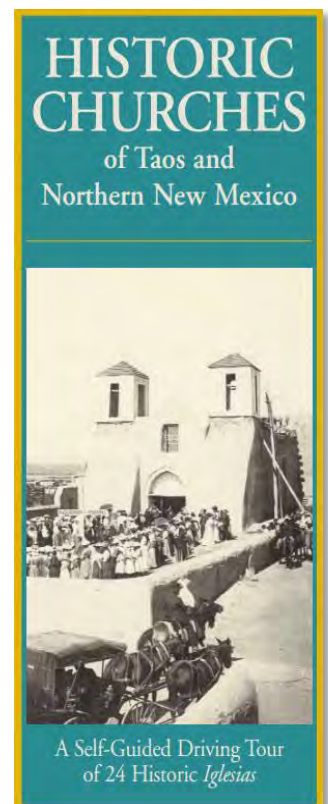
**Especially during the month of May!**

You are invited to explore the historic adobe churches of northern New Mexico during National Historic Preservation Month. Observe the melding of 500 years of multicultural influences in their distinctive architecture. You will see that these sometimes humble structures are the very heart of the communities they serve. Please observe visitors' etiquette throughout your journeys. Photography is generally acceptable outside but never inside. These architectural treasures are houses of worship. Honor their sanctity with the same respect you afford your own spiritual spaces.

The traditions that created these 24 *iglesias* (churches) can be even better understood by visiting the museums of Taos and Chimayó. You will see artifacts like those that adorn the churches—santos and retablos (images of saints), photography exhibitions with commentary by experts in the fields of art and architecture, and artists' interpretations of the churches in paint on canvas.

Funded sponsors include: Town of Taos, Taos County Lodgers Tax grant; Chevron, Questa Mine; Hotel La Fonda de Taos; Historic Taos Inn; Museum Association of Taos; & New Mexico Department of Tourism.

Check the [www.taos.org](http://www.taos.org) website for further information, a map, and recommendations for making your tour most enjoyable.



## Historic Downtown Albuquerque

### Walking Tours

10 A.M. – 12 Noon

Saturdays

Free Admission



The Albuquerque Historical Society offers free walking tours of Downtown Albuquerque. They meet at the corner of First and Central and end the tour near Robinson Park, a total of 8 blocks. The New Mexico Territory attracted a diverse population before and after the Atchison Topeka & Santa Fe Railroad arrived in the territory in 1880. These tours highlight the historic events and characters that shaped New Town into modern Albuquerque. Parking is free on Central Ave. on Saturdays (A.R.T. construction project permitting). Bring no pets on these tours as the tour provides entrance into several historic buildings that do not allow pets (only service animals). Call (505) 289-0586 for information or to arrange for a group over 5 or special tour for your organization.

## Santa Fe Margarita Trail

TOURISM Santa Fe Visitor Information Center

201 W. Marcy Street

Santa Fe

12:00 A.M. – 12:00 P.M.

Admission: \$ 3



Santa Fe has always been a mecca for those who love margaritas—the beloved beverage both our residents and visitors like to savor. It is most unusual to find a restaurant or bar in Santa Fe that does not feature a margarita on its cocktail list. The Santa Fe Margarita Trail features 31 amazing margaritas, all made with 100% agave tequila and promises to be one of your most memorable Santa Fe adventures. By purchasing your Santa Fe Margarita Trail Passport at any TOURISM Santa Fe Visitor Center or Margarita Trail participating restaurant, you will get a \$1 discount of the special margarita offered by the participating restaurant. Have your passport stamped and dated at each location and accrue points toward a commemorative T-shirt (5 stamps), a signed copy of *The Great Margarita Book* (20 stamps), or your own Margarita Bartender Kit (all 31 stamps).

## **Fantasia Fantastica: Imaginative Spaces Other-Wordly Collages**

**National Hispanic Cultural Center  
Albuquerque**

**10 A.M. – 5 P.M.**

**Admission: \$ 6, adults; \$5 adult NM residents;  
free, youth under 16.**



This exhibition features the fantastical creations of four artists whose works toy with space and expand the parameters of collage. The artists, Nick Abdalla, Cynthia Cook, Carlos Quinto Kemm, and Rachel Muldez, collect objects and images that populate the day-to-day but often go unnoticed. They then reframe them as part of a new imaginative whole. The works in this exhibition offer opportunities to contemplate how fantasy and the imaginary inform daily life as well as the historical and contemporary climate of Hispanic and Latina/o art more broadly. Contact the center: (505) 246-2261; [www.nhccnm.org](http://www.nhccnm.org). The National Hispanic Cultural Center is located at 1701 Fourth Street, SW.

**May 1, 8, 15, 22 & 29**

### **Art Walking Tours**

**New Mexico Museum of Art**

**Santa Fe**

**10 A.M.**

**Fee: \$10**



**FANTASÍA  
FANTÁSTICA**

IMAGINATIVE SPACES AND OTHER-WORLDLY COLLAGE

Explore the art of Santa Fe in the open air. Guided by the museum's docents, the tours highlight the rich art and architectural history of downtown Santa Fe. The tour departs from the Museum Gift Shop steps. Proceeds benefit the museum's educational programs. Call the museum at (505) 476-5072 or visit their website: [www.museumofnewmexico.org](http://www.museumofnewmexico.org).

## May 5

### **Smokey Bear Days**

**Smokey Bear Historical Park**

**Capitan**

**9:00 A.M. – 5:00 P.M.**

**Free Admission**

*Smokey the Bear, Smokey the Bear,  
Prowlin' and a growlin' and a sniffin' the air.  
He can smell a fire-- before it starts to flame.  
That's why they call him Smokey,  
That's how he got his name.*

Join Smokey [the] Bear as he is celebrated in his home town of Capitan! Free fun for all ages including a parade; chainsaw carving auction; arts, crafts, and food vendors; live music; street dance; the Firefighters Challenge; a Smokey Bear Memorabilia Auction; and a chance to have your picture taken with Smokey! The Smokey Bear Historical Park is located on highway 380 (better known as 118 W. Smokey Bear Blvd). It is operated by the EMNRD-Forestry Division. Call (575) 354-2748 for more information.



## May 5

### **The Worldwinds: Celebration of Cinco de Mayo!**

**Petroglyph National Monument**

**Albuquerque**

**7 – 9 P.M.**

Join us for this celebratory concert by the Albuquerque Worldwinds Quintet, playing music by Mexican and other Latin American composers such as Astor Piazzolla, Marlano Mores, Paquito D'Rivera, and Ignacio Cervantes. Petroglyph NM is located at 6510 Unser Blvd, NW, in Albuquerque. Contact Allison Martin at (505) 988-0205 or via email, [Allison\\_martin@nps.gov](mailto:Allison_martin@nps.gov), for further information.

## May 5 – 6

### Cinco de Mayo Fiesta

Town of Mesilla

Historic Plaza

12:00 P.M. – 10:00 P.M. Saturday

12:00 P.M. – 7:00 P.M. Sunday

Free Admission



The Town of Mesilla is hosting its 2017 Cinco de Mayo Fiesta on its historic plaza and will feature live ballet folklórico, mariachi performances, and free concerts each evening. More than 30 vendor booths will offer a variety of products including art, crafts, games, drinks, and authentic Mexican cuisine. There will be rides, a greased pole climb and piñatas for the kids. The date, Cindo de Mayo, commemorates the victory of Mexican soldiers over the French army at the Battle of Puebla in 1862. Phone (575) 571-3890 for further information or questions.

## May 5 – 7



### Tucumcari Rawhide Days

Tucumcari

Tucumcari Historical Museum

416 South Adams

Museum: 9:00 A.M. – 5:00 P.M.

Daytime events: hours vary; check museum

Evening: Concerts begin at 7:30 P.M.,  
Odeon Theater

this event, celebrating the Old West and the filming of the Rawhide TV series. There will be everything from a cattle drive and parade to live music, Longhorn photo shoot, a blacksmith competition, wagon rides, gunfights, and of course food and drink, all New Mexico traditions. Phone (575) 461-1400; email: [tumcarirawhidedays@gmail.com](mailto:tumcarirawhidedays@gmail.com); website: [www.tucumcarirawhidedays.com](http://www.tucumcarirawhidedays.com).

**May 6**

**GIVE GRANDLY @ Silver City Farmers' Market!**  
**Silver City Mainstreet Plaza**  
**Silver City, NM**  
**8:30 A.M. to 12:00 P.M.**



**Give Grandly-Give Local** is part of an annual, nationwide fundraising event that focuses donations to local non-profits in one 24-hour window (12:01 am to 11:59 pm), a giving day. Many state and local community foundations participate as part of their mission to support local nonprofits. They believe that by facilitating and supporting these giving days, they can increase the impact of nonprofits in their communities and foster a local culture of giving. The market can be found off Bullard Street between 7<sup>th</sup> and 8<sup>th</sup> Streets, by the Big Ditch.



***Mimbres Culture  
Heritage Site***

**Mimbres Culture Heritage  
Site**  
**Mimbres, NM**  
**Open Daily, check website for  
Spring/Summer Hours**

**Look for the Imogen F. Wilson Education Foundation Booth. This foundation is the steward of the [Mimbres Cultural Heritage Site](#), and is using this *Give Grandly Day* to raise funds to meet a board member challenge grant for much needed maintenance work at the site.**

The Mimbres Cultural Heritage Site includes the Mattock Archaeological Site, location of a 1000 year old Mimbres pit house and pueblo village, as well as two 19<sup>th</sup> century adobe, Mimbres Valley ranch houses, one of which houses the Mimbres Museum, visitor welcome center, gift shop, accessible restroom facilities and a Community Room. The site is located south of the Gila Cliff Dwellings and east of Silver City on NM Hwy 35, Mile Marker 4. Website: [www.mimbresculturalheritagesite.org](http://www.mimbresculturalheritagesite.org); phone: (575) 536-3333; email: [Mimbrescultureheritagesite@gmail.com](mailto:Mimbrescultureheritagesite@gmail.com); snail mail: 12 Sage Dr., Mimbres, NM 88049; or MCHS, PO Box 307, Mimbres, NM 88049.



## May 6

### Zuni Pueblo MainStreet Festival

Zuni Tourism  
1239 Highway 53  
Zuni Pueblo  
9:00 A.M. – 6:00 P.M.  
Free Admission

Plan to attend the 5<sup>th</sup> Annual Zuni Pueblo MainStreet Festival for a street long celebration of community, culture, arts, and commerce! Enjoy traditional Zuni social dances, arts demonstrations and markets, exhibits, and special events a multiple venues along Zuni Pueblo's downtown MainStreet.  
Phone (505) 782-7239 for further information.



Coming soon ...  
**5th Annual Zuni Pueblo MainStreet Festival**  
**Saturday, May 6, 2017**  
*Artists, Vendors, Dance Groups,  
Demonstrators, Tribal/Community programs,  
Organizations and Volunteers Wanted*  
For additional information, please contact Zuni Pueblo MainStreet  
Wells.MahkeeJr@ashiwi.org 505.782.7239



## May 6 & 13

**Ranger-led talk:**  
**Buffalo Soldiers at Fort Union**  
Fort Union National Monument  
Watrous  
2:00 P.M.  
Free, no reservation required  
Park Fee may apply

Buffalo Soldiers were African American men enlisted as regular Army soldiers for the first time beginning in 1866. The Buffalo Soldiers served at Fort Union from 1875-1881 and this talk, lasting 20-30 minutes will highlight their experience at Fort Union and western forts in general. Contact the park with questions: (505) 425-8025, ext. 0.

## May 6

**13<sup>th</sup> Annual Master Gardener Garden Fair**  
Santa Fe Master Gardener Association  
Santa Fe County Fair Grounds  
3229 Rodeo Road, Santa Fe  
9 A.M. – 1 P.M.  
Free Admission

Agriculture and horticulture are New Mexico traditions and this event provides a great opportunity to learn more about sustainable gardening practices, composting, and native plants. And then there is the plant sale, where you can purchase plants known to prosper in our alkaline soil.

For more information visit our website: [www.sfmga.org](http://www.sfmga.org).



## May 6

**Skins and Skulls**  
White Sands National Monument  
Alamogordo  
Visitor Center Courtyard  
3 P.M. – 3:30 P.M.  
Program is free; park entrance fee applies

Join a ranger for an informative discussion about the 44 different species of animals that live at White Sands National Monument. The ranger will have pelts, skulls, props, and other interesting facts to provide you with a hands-on look and feel of the elusive wildlife of White Sands. Contact the park at 575-479-6124 for further information or visit their website: [www.nps.gov/whsa/](http://www.nps.gov/whsa/).

**May 6, 13, 20 & 27**

**Adobe Brick Workshops**

**May 6 & 20**

**Courtyard, Palace of the Governors**

**May 13 & 27**

**San Miguel Chapel**

**Santa Fe**

**9 A.M. – 3 P.M.**



In celebration of Historic Preservation Month, Cornerstones and Adobe in Action are hosting four free adobe brick-making workshops, starting each Saturday in May with an introductory talk at 9 am. People of all ages are welcome to participate and learn about the oldest “green” building process in existence. Participants will receive a Certificate of Accomplishment and be informed of the destination of the bricks they made. Cornerstones works in partnerships with communities to restore historic structures, encourage traditional building practices and affirm cultural values. For further information, call (505) 982-9521 or email Nicole Kliebert at [nkliebert@cstones.org](mailto:nkliebert@cstones.org).

**May 6, 13, 20 & 27 Weekends**

**Outdoor Fine Art Show**

**Santa Fe Society of Artists**

**First National Bank Santa Fe Parking Lot**

**9:00 A.M. – 5:30 P.M.**

**Free Admission**

Buy fine art directly from Santa Fe’s premier local artists! For over 35 years, the Santa Fe Society of Artists has been supporting Santa Fe artists in the society’s juried, outdoor shows. You’ll find paintings, sculpture, printmaking, and photography from a variety of local artists who can be found here most weekends from mid-April through mid-October. Enter the show from either Palace Ave or San Francisco St, just behind the bank which fronts on the west side of the plaza.



## May 9 - 10



### Full Moon Hike

White Sands National Monument  
Alamogordo

7:45 P.M. – 8:45 P.M.

Reservations required & accepted one month in advance

Park Entrance fee and program fees apply

Have you ever wanted to hike the dunes under the magical glow of the full moon? This is your chance to enjoy the peace and serenity of this elusive environment and experience what the animals that live in the area see at night. Join a ranger for a full moon hike and see first-hand how these animals survive in the dunes. Full moon hikes are offered once a month on the night before the full moon. Reservations are required for this program and must be made through [Recreation.gov](https://www.recreation.gov) or by calling (1-877-444-6777).

## May 10 & 20

### Vineyard and Winery Tour

St. Clair Winery

1325 De Baca Road

Deming

8:30 A.M. – 5:30 P.M.

Admission: \$69/person

This vineyard and winery tour is a definite behind-the-scenes, V.I.P. experience! The tour will begin at the Las Cruces St. Clair Winery & Bistro with a Mimosa greeting or, if departing from Deming, pickup can be arranged from the Deming Tasting Room. You will be then taken to the St. Clair Vineyards in Lordsburg where you will be led by well-informed tour guides around the 180 acres of wine grape vines. After enjoying a delightful box lunch and wine pairing hosted by Hervé Lescombes from his personal wine cellar, your next stop will be the operational winery in Deming, where you will be treated to a V.I.P. six-barrel wine tasting.



Tickets may be purchased at: <https://stclairwiner260.corecommerce.com/Vineyard-Winery-Tours-c22/>.

Tour guests should wear long sleeves and no high heels or open-toed shoes. For further information, call 1-888-799-2637; website: [www.stclairwinery.com](http://www.stclairwinery.com).

## May 10

### May Full Moon Night

White Sands National Monument

Alamogordo

Evening Program Area

7:30 P.M. – 8:30 P.M.

Entrance Fee applies; no additional program fee



The Island of Misfit Morphs is a nonprofit educational outreach program dedicated to educating the public on how to respect wildlife and those beings that are different and unique. Snakes, lizards, frogs, arachnids, and even insects get a bad reputation through media, tall tales, and word of mouth. Come join us for a night of hands-on learning about the animals that are important to various ecosystems and how you can help protect them. Contact Rebecca Burghart, (575) 479-6124; or by email: [Rebecca\\_burghart@nps.gov](mailto:Rebecca_burghart@nps.gov).

## May 11

### “Fireside Chat: Allan Houser, talk and tour”

Allan Houser Sculpture Garden

Santa Fe

4 P.M.

Fee: \$15 per person

Chiricahua Apache Allan Houser was a student of the Santa Fe Indian “Studio School” from 1934-1938, on his way to becoming one of the three Native American artists of murals in the US Department of the Interior building Cafeteria and Gift Shop in the late 1930s (under the auspices of the New Deal) to his incredible body of sculptural works that earned him the National Medal of Arts award, the first Native American to be so honored, in 1992. Join the National New Deal Preservation Association in learning more about this incredible talent and experience the beautiful garden that Houser (born Haozous) created. Dave Rettig will conduct a tour of the Garden and discuss Houser’s amazing works of sculpture. For more information contact Kathy Flynn, NNDPA, (505) 690-5845 or email [newdeal@cybermesa.com](mailto:newdeal@cybermesa.com). The sculpture is located on south highway 14, on the left before reaching Cerrillos.



**May 12**

**Crownpoint Navajo Rug Auction**

**Crownpoint Elementary School, Crownpoint**

**4 – 7 P.M., display and inspection**

**7 – 10 P.M. or later**

**Free**

**Ya'at'eeh**

**(Welcome)**



The Crownpoint Trading Post started this event more than 50 years ago and it features genuine Navajo, all-wool, handmade rugs and their weavers. Since 2014 the event has been managed by the Navajo Rug Weavers' Association of Crownpoint. It is an excellent opportunity to immerse yourself in the cultural tradition of the Navajo weaving with the option of purchasing the genuine article—a truly traditional Navajo rug. Check [crownpointrugauction.com](http://crownpointrugauction.com) for further details.

**May 12**

**The 45<sup>rd</sup> Annual Historic Preservation Awards**

**New Mexico Historic Preservation Division and the**

**Cultural Properties Review Committee**

**Saint Francis Auditorium, Museum of Fine Arts**

**Santa Fe**

**2 P.M.**

***Reservations required due to limited space, admission free***

The state Cultural Properties Review Committee and the New Mexico Historic Preservation Division present awards for outstanding achievements in architectural and archaeological preservation, publication, individual achievement, preservation initiatives by organizations and individuals, and Lifetime Achievement Awards. This year the ceremony is taking place in the historic St. Francis Auditorium. To quote Carl Sheppard, art historian and professor, in his work *The Saint Francis Murals of Santa Fe*, “The Saint Francis Auditorium in the Museum of Fine Arts of New Mexico encloses the most imposing and romantic public space in the City of Santa Fe, New Mexico. It is a handsome, ample room with a rear balcony and a choir-like projection so that one is inevitably reminded of Hispanic church architecture of the seventeenth century.” Contact Tom Drake, HPD, [tom.drake@state.nm.us](mailto:tom.drake@state.nm.us), for further information. To **RSVP**: Susie Hart 505-827-6320



## May 12 -14

### 16th Annual Mother's Day Celebration

Kit Carson Park

Taos

Free Admission

MNOC Broadcasting Inc. is the host of this free community concert weekend. Typically there are over 10,000 people in attendance. The event is a three day family oriented event which unites families, friends, and neighbors in honor of our mothers while preserving our traditions, heritage and culture. More Information Call 575-758-4491 or visit [KXMT 99.1FM](http://KXMT99.1FM) "Radio Exitos"



## May 13

### Salmon Ruins' Annual Tour to the Dinétah

Salmon Ruins Museum, Bloomfield

9 A.M. – 4:30 P.M.

Free admission, reservations required

Meet at Salmon Ruins parking lot at 9 A.M. to participate in this caravan-style tour of the defensive sites and rock art of the Dinétah, the ancestral homeland of the Navajo. The pueblitos, as these sites are also called, were built on top of large boulders or canyon edges, and used for protection from raiders and adversaries between roughly AD 1450 and 1705.

Larry Baker, career archaeologist and Executive Director of Salmon Ruins, will be your guide for this tour. Be prepared

for incredible scenery, have a full tank of gas, and bring your lunch, beverages, and necessities for the day-long tour. This annual, public tour is offered in celebration of New Mexico Heritage Preservation Month. Salmon Ruins Museum is located at 6131 US Highway 64, 2.5 miles west of Bloomfield and 3.2 miles east of SunRay Park & Casino in Farmington. Phone: 505-632-2013 or email: [sreducation@sisna.com](mailto:sreducation@sisna.com) to make your reservations.



## May 13

**9<sup>TH</sup> Annual Alternative Health Fair**  
800 20<sup>th</sup> Street NW, Albuquerque  
10 A.M. – 3 P.M.  
Free Admission

Don't miss the hottest Alternative Health Fair in Albuquerque! An event focused on just feeling good! Come to Mama's Minerals in Albuquerque on Saturday, May 13, 2017 from 10:00 am to 3:00 pm to experience New Mexico's finest healers and purveyors of healthy lifestyles. Sample alternative health treatments in this outdoor event, including Kinesiology, Chair Massage, Acupuncture, Reiki, Aromatherapy, Yoga, Chakra Balancing, Intuitive Readings, Chinese Medicine, *Curanderas* and much more! Support your local community at this health-conscious event. Mama's Minerals hosts this Alternative Health fair as an opportunity for local businesses to offer their insight into alternative health options. Phone (505) 266-8443, website: [www.mamasminerals.com/althhealthfair](http://www.mamasminerals.com/althhealthfair).



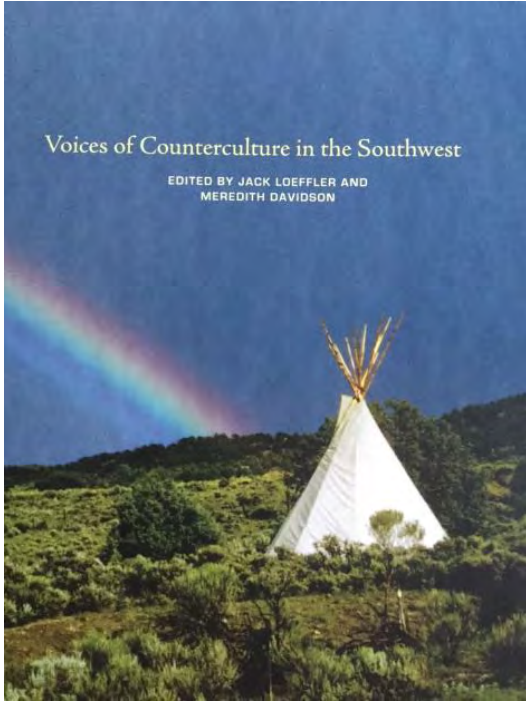
## May 13 & 14

**Transcending Time**  
Arthur Bell Auditorium  
Harwood Museum of Art  
Taos  
5:30 P.M.  
Fee: \$25 adults, \$10 students



Transcending generations, Taos Chamber Music Group's season concludes with a multimedia collaboration with optics artist Ethan Jackson and features young musicians, Eliana Razzino Yang (16) and Michelle Cann (28). In addition, flutist Gretchen Pusch returns for J.S. Bach's Trio Sonata 1029 and Yuko Uebayashi's Transcending Time for two flutes and piano. Cann will also perform solo in Debussy's Images, and Yang joins her for Beethoven's Cello Sonata No.4 in C Major, Op. 102, No.1 and plays George Crumb's Sonata for Solo Cello. Michelle Cann, piano | Eliana Razzino Yang, cello | Gretchen Pusch, flute | Nancy Laupheimer, flute | Ethan Jackson, artist. Tickets are available at the Harwood Museum, 238 Ledoux St, phone (575) 758-9826. Visit the TCMG Website: [www.taoschambermusicgroup.org/](http://www.taoschambermusicgroup.org/)





**May 14**

**Voices of Counterculture in the Southwest**

**New Mexico History Museum**

**Santa Fe**

**10 A.M. – 5 P.M.**

**Opening Day, Free Admission**

Dew Mexico, the Land of Enchantment, had a lot of appeal during the 1960s and 70s to those intrepid pioneers of the Hippie era. Curators, Meredith Davidson and Jack Loeffler, tell the story of cultural revolution through first person audio from over 50 interviews with those who lived through the era. Documentary photography and artifacts help reinforce the role that individual actions take in shaping the course of history. So many of the social and political issues of the day still resonate and the museum will invite visitors to share their own stories in an audio feedback booth. You won't want to miss this exhibition.

**May 14**

**Voices of Counterculture in the Southwest**

**Exhibition Keynote Lecture: Gary Snyder**

**Pulitzer Prizewinning Poet**

**Lensic Performing Arts Center**

**Santa Fe**

**5 P.M.**

**Tickets required: \$25**



Poet Gary Snyder has hung with the Beats, studied Buddhism, worked as a logger and he's still going strong in his 80s. He has been called the modern-day Henry David Thoreau and described as an eco-poet and an eco-warrior. What will he have to say to us today? Give the Lensic a call for tickets, (505) 988-1234 or go to [www.lensic.org](http://www.lensic.org).



## May 15

### Blessing of the Fields

NM Farm & Ranch Heritage Museum  
Las Cruces

10:00 A.M. – 12 P.M.

Free admission for this event

Starting at 10 AM there will be a colorful procession around the museum grounds,

to bless the animals, plants, and irrigation system. Before the procession, Henry Narvaez, Cacique of Tortugas Pueblo, will lead the prayer to the four directions. A plant sale will be held as part of the festivities which will include a fiesta, with food and entertainment. This program, offered by the museum for the 19<sup>th</sup> time this year, focuses on Spanish New Mexico's long and rich ranching history. San Ysidro, patron saint of farmers, lived from 1070 to 1130. He worked the fields for a wealthy landowner and was known for his devotion to God, his humility, and his generosity to those less fortunate than him. This story has been passed down through the generations and still inspires many farmers and their families in the Mesilla Valley. For many years workers in San Miguel would make a pilgrimage each May, stopping at all the villages along the valley. The **NM Farm & Ranch Heritage** museum is located just off I-25 at 4100 Dripping Springs Road. Take the University Exit (Exit 1) and go east 1.5 miles. Check their website for more details: [www.nmfarmandranchmuseum.org](http://www.nmfarmandranchmuseum.org)

## May 16

### Rowe Mesa Rock Art

Pecos-Las Vegas Ranger District Office

SF National Forest

9:30 A.M.

Free admission; please RSVP



Join us to explore two unusual horizontal rock art panels on Rowe Mesa. These petroglyphs date to roughly 4000 - 3300 B.C, and are unique in both design and location. Both panels are easily accessible, but the trip will require a high clearance vehicle. Limit of 8 people. Contact Annmarie Kmetz, Pecos-Las Vegas Zone Archaeologist, SF National Forest. 505-757-6121 or [akmetz@fs.fed.us](mailto:akmetz@fs.fed.us). Pecos District Office is located at 32 South Main Street, Pecos, NM. From Santa Fe, take I-25 North to the 299 (Glorieta) Exit. Turn left to cross over the highway. Turn right after crossing the bridge at the T-intersection onto NM 50 towards Pecos. Drive for 6 miles. At the intersection with Main Street (and the only stop sign) turn right. Dollar General, a bank, and Panchos Gas Station are on the corners at this intersection. The ranger station is about 1 mile on your right.



**May 19**

## **Pueblo Craft Revitalization and the Women Of Duchesse Castle**

**Tsankawi Annex**

**Bandelier National Monument**

**1:00 P.M.**

**Park Admission applies**

Verra van Blumenthal and Rose Dougan worked with potters from San Ildefonso Pueblo at Duchesse Castle to revitalize and encourage developing Pueblo crafts. These two women helped to shape the history of Southwestern art, and their story focuses on the Pueblo artists who came to Duchesse Castle to refine their art for sale to the burgeoning tourist market of the early 1920s. Bandelier archeologists and preservationists will lead the hike to the castle site. The tour group will meet at the Tsankawi parking lot, 3 miles north of White Rock, NM. Leaders will gather and orient the group, then reassemble everyone at a parking lot closer to the site near the junction of Highway 502 and Highway 4. Contact JT Stark at (505) 672-3861, ext. 308, or the Visitor Center, (505) 672-3861, ext. 517 for further information.

**May 19**

## **Poshuouinge Pueblo Walking Tour**

**Abiquiu**

**10 A.M. – 1 P.M.**

**Free Admission**



Protected thanks to the passage of the NHPA, the Ancestral Pueblo site of Poshuouinge lies along the banks of the Rio Chama near Abiquiu. Poshuouinge is a Tewa word that translates as “village above the muddy river.” The 23-acre site is a large Classic Period pueblo occupied from ca. AD 1375 to 1500. The pueblo consists of two large, contiguous, quadrangular adobe and basalt cobble roomblocks (700 estimated ground level rooms), two plazas, two kivas, a tower, rock art, and agricultural features. This walking tour will follow a moderately steep trail that is approximately one mile round trip. The trail rises approximately 220 feet from the parking lot to the hilltop overlook. The path is not paved and there is no water available along the trail. Sponsored by the Espanola Ranger District of the Santa Fe National Forest, contact Jana Comstock, 505-753-7331, [jmcomstock@fs.fed.us](mailto:jmcomstock@fs.fed.us) with questions. Meet at the Poshuouinge Interpretive Site parking lot Near Abiquiu on SR 83, 2.5 miles south of Bode’s Store and 1.2 miles north of the Junction of US84 and SR554 (the El Rito road).



**May 19 – 21**

**The Taos Lilac Festival**

**Taos**

**10 A.M. – 5 P.M. typical**

**Free admission, most events**

This celebration of the heritage of lilacs will feature ongoing Self-Guided Walking Tours through the Taos Historic District as well a Lilac

Garden Center, an Arts & Crafts Fair, a Beer & Wine Garden, along with a Pet Parade, Pet Costume and Trick Contests & Pet Blessing and the Tio Vivo Carousel, one of the oldest flying jenny carousels still in operation in the US, and featured in Taos Fiestas every year for more than 70 years. Lilacs flourish abundantly in Taos and peak the last two weeks of May. See the Taos Lilac Festival website for the complete schedule of events:

[www.taoslilacfestival.com/events](http://www.taoslilacfestival.com/events).

**May 19 – 21**

**Santa Fe: People & the Land Photo Workshop**

**With award winning photographer Craig Varjabedian**

**Eloquent Light Photography Workshops, LLC**

**903 W. Alameda St, #115**

**Santa Fe**

**Friday, 2 P.M**

**Fee: \$495**



Santa Fe is one of the world's top award-winning and most beloved destinations—four centuries of history and legend, ancient and modern cultures, surrounded by a majestic landscape of juniper and piñon-covered hills, aspen and cottonwood groves with deep blue skies and radiant light. With ancient adobes, big skies, and stunning vistas to photograph and inspire you, come to the most enchanting place in the United States. Northern New Mexico has a variety of stunning landscapes from rugged mountains, to rivers and streams, national parks, and historic churches, villages and plazas. Here three cultures came together in harmony: the Native Americans since ancient times, the Spanish of 400 years, and more recently the Anglo traditions bring together a rich heritage. New Mexican faces reflect both the intimate beauty and rough-hewn grandeur of this enchanted land. You will photograph cowboys with their horses, unique rock formations, river overlooks, mesas and mountains and historic adobe architecture for a truly authentic taste of New Mexican history and culture. Visit the website: [www.eloquentlight.com](http://www.eloquentlight.com) for further information or call (505) 983-2934.

**May 20 - 21**

**Salmon Ruins Museum Annual Open House**

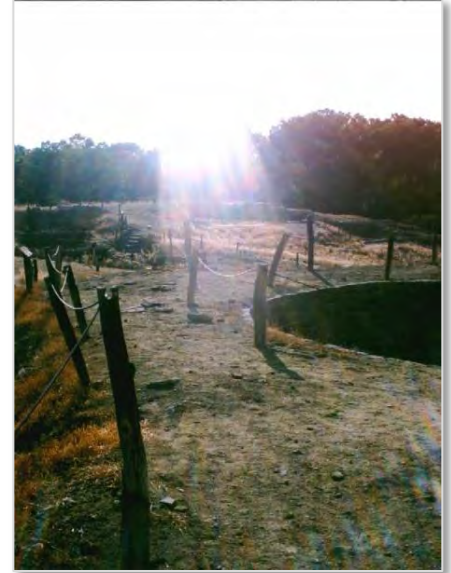
**Salmon Ruins Museum, Bloomfield**

**9 A.M. – 5 P.M.**

**10 A.M., Guided tour by Larry Baker**

**2 P.M., Discussion about ancient Pottery by Tori Meyers**

**Free admission all day!**



Salmon Ruins Museum offers an 11<sup>th</sup> century Chacoan pueblo ruin; an 1890s pioneer homestead, dugout, and bunkhouse; and Heritage Park, interactive replica architecture representing different cultures through time. Tables and an observation deck are available for picnicking.

Contact Salmon Ruins Museum, (PO Box 125), 6131 US Highway 64, Bloomfield, NM, phone 505-632-2013 or email: [sreducation@sisna.com](mailto:sreducation@sisna.com). To get to the museum from Farmington, take US 64 east 3.2 miles east of SunRay Park & Casino; from Bloomfield, go 2.5 miles west on US 64. The Museum is on the south side of the highway.



**May 20 - 21**

**Santa Fe Century Ride**

**Christus St. Vincent's Hospital Parking Lot**

**Saint Michael's Drive and Hospital Drive**

**Saturday, 5 P.M. – 7 P.M., Onsite Registration & Vintage Bicycle Pageant**

**Sunday, 7 A.M., Course officially open for all riders  
5:30 P.M., Century venue closes**

Participate in the 32<sup>nd</sup> annual Santa Fe Century ride, either in the 20 mile, 50 (half-century) mile or the 100 (Century) mile rides. If you're really fit, try the timed Grand Fondo (100-mile race) or Medio Fondo (50-mile race). The Century route follows the ancient Turquoise Trail through the historic mining towns of Madrid and Golden, over the mineral rich Ortiz and San Pedro Mountains, across the rolling Estancia Valley, past the traditional villages of Cedar Grove, Stanley, and Galisteo, and returns to scenic Santa Fe. Enjoy a massage and attend the awards ceremony at the Celebration Corral featuring live music, craft beers, and Cowgirl BBQ. Information and Pre-Register at [www.santafecentury.com](http://www.santafecentury.com); call 406-381-2690 with questions.

**May 20 – 21**

**CrawDaddy Blues Fest**

**Madrid Railyard**

**Madrid**

**Noon - ? both days.**

The Mine Shaft Tavern in beautiful downtown Madrid will be hosting the 10th Annual - CrawDaddy Blues Fest! Gates open at noon. Advance Tickets \$15 Per Day / \$25 Both Days (\$20 at Gate) Parking & a shuttle will be available on the north end of town. The Mine Shaft Tavern brings in fresh live crawfish so if you love ‘em, you need to come out to this event. In addition to crawfish, green chile blue crab cakes, crawfish etoufee, gumbo, and Texas BBQ Ribs, brisket and smoked pork are available. Fresh squeezed Hurricanes served here! There will be a full bar and plenty of shade. Rain or shine. Kids under 12 are free, no coolers or outside beverages or food allowed. There are three stages during the festival—inside the historic Mine Shaft Tavern, the Deck at the Mine Shaft Tavern and our tented amphitheatre. The Mine Shaft Tavern is only location where tickets are not required except for special show 8pm on Saturday May 20. “Laissez les bons temps rouler!” Check out their website: [www.themineshafttavern.com](http://www.themineshafttavern.com). For additional info call: (505) 473-0743.



**May 20 – 21**

**Navajo Rug Sale**

**Petroglyph National Monument**

**Albuquerque**

**10 A.M. – 4 P.M.**

**Free Admission**

This is your opportunity to purchase authentic Navajo rugs and jewelry from the Hubble Trading Post, for sale in the visitor center patio. Contact Allison Martin via phone at (505) 899-0105 ext 333 or email [Allison\\_martin@nps.gov](mailto:Allison_martin@nps.gov).

## May 26

**Bat Flight Program**  
**Carlsbad Caverns NM**  
**Bat Flight Amphitheater**  
**Time to be determined**  
**Free Admission**

Join park staff for the first "Bat Flight Program" of 2017 - an evening talk where a ranger presents information about bats prior to their flight. People come from all over the world to watch nature at its finest in the form of the Brazilian free-tailed bats leaving the cave each evening in the summer. The size of the colony fluctuates from night to night and season to season. Between 200,000 and 500,000 bats call the cave home over the summer, swelling to over one million during migration. Very few places in the United States remain wild enough to view wildlife in their natural settings on such a large scale. Carlsbad Caverns National Park is one of the few places. We invite you to join us for this breath taking event every summer as long as the bats see fit to bless us with their presence. No reservations are required for this program that happens every evening from Memorial Day through October at the outdoor amphitheater (near the mouth of the cave). The starting time of the talk varies with sunset times - please call the park (575) 785-3012, or check the website under "Things to Do." You can inquire at the visitor center to verify the program time once inside the park.



## May 26 -28

**Native Treasures: Indian Arts Festival**  
**Community Convention Center**  
**Santa Fe**  
**Friday, May 26: Pre-show Celebration & Benefit**  
**5:30 P.M. – 7:30 P.M.; Admission \$125**  
**Saturday, May 27**  
**9 A.M. – 10 A.M.; Admission \$25**  
**10 A.M. – 5 P.M.; Admission \$10**  
**Sunday, May 28**  
**10 A.M. – 5 P.M.; Free Admission**



Come to Santa Fe's only museum-quality Indian art show and sale. Over 200 Native American artists participate, each of whom is specially invited by the Museum of Indian Arts and Culture, to represent the best and brightest of the Indian art world. Many of these artists are represented in the Museum's permanent collection, and each artist generously donates a portion of sales to the Museum's programs. Check the website: [www.nativetreasures.org](http://www.nativetreasures.org) for details.

## May 27

### **Turkey Feather Blanket Weaving And Native American Jewelry Petroglyph National Monument Albuquerque 10 A.M. – 4 P.M. Free Admission**

Santo Domingo Pueblo artist Caroline Lovato will demonstrate turkey feather weaving and display authentic jewelry. For further information email Allison\_Martin@nps.gov. or phone (505) 899-0205 ext 333. Petroglyph NM is located at 6510 Unser Blvd, NW.

## May 27 – 28

### **Riverfest Berg and Animas Parks Farmington 10 A.M. – 6 P.M. Free Admission**

Celebrate the area's rivers with a festival of music, food, activities and entertainment. This festive celebration takes place along the Animas river trails, from Berg Park to Animas Park in Farmington. Riverfest activities include the annual Wiener Dog Races, Riverfest 10K / 5K run & walk, river raft rides, live music, kid activities, fun vendors, American Indian market & dance, Riverfest Fine Art Show, Disc Golf Tournament, beer & wine garden and more!



## May 27 – 29

### **17<sup>th</sup> Annual Albuquerque Wine Festival New Mexico Wine Balloon Fiesta Parkway NE 11:30 A.M. – 6:30 P.M. Fee: \$20**



New Mexico was America's first "Wine Country." Step into the southwest where wine tasting is nothing short of enchanting. New Mexico has been a proud producer of grapes for more than 400 years starting with mission grapes brought by Spanish Colonists from New Spain. The Colonists, whose travelers included Monks, needed wine for their daily mass, which led them to plant a variety of wine grapes in the fertile New Mexican soils. Today, New Mexico remains a vibrant wine region containing an incredible variety of vineyards, wineries, and tasting rooms amidst the low and high-desert vistas of the state. 22 New Mexico wineries will be represented at this festival.





**May 27 – 29**

**25<sup>th</sup> Anniversary Las Cruces Wine Fest  
(Formerly Southern New Mexico Wine Fest)  
Southern New Mexico State Fairgrounds  
12125 Robert Larson Blvd, Las Cruces  
Noon - 6 P.M.  
Check website for admission fee**

Celebrate the rich history of New Mexico Wines at the Las Cruces Wine Festival. Sample wines from wineries around the state, shop vendors from all over the southwest, eat, listen to live music and attend sessions at the University of Wine to learn more about food and wine pairing. The event is open all three days - Saturday, Sunday, and Monday from noon - 6:00 pm. Ticket purchased is good for any one of those three days. Attendees must be 21 years old or accompanied by parent or legal guardian. Please bring valid photo ID. Website: [www.NMWine.com](http://www.NMWine.com).

**The *Calendar of Events* is compiled by the New Mexico Heritage Preservation Alliance and distributed by the state Historic Preservation Division. If you would like your event posted in next year's edition, please check HPD's Heritage Preservation Month web page for forms and instructions, [www.nmhistoricpreservation.org](http://www.nmhistoricpreservation.org).**