

Preserving the Enchantment

A Plan for New Mexico, 2007 – 2011



New Mexico Historic Preservation Division



NEW MEXICO DEPARTMENT OF
CULTURAL AFFAIRS

www.nmhistoricpreservation.org

Preserving the Enchantment

Five-year Vision Statement, 2007 — 2011

In 2012, New Mexico will officially celebrate its centennial of statehood. The centennial provides New Mexicans an opportunity to honor legacies from the past and to envision its future.

In generating this plan, we have heard from many people across the state in all walks of life about the roles they would like historic preservation to play in the coming years. Our five-year plan, *Preserving the Enchantment: A Plan for New Mexico 2007-2012*, is a compilation of those ideas.

Our vision for the future sees New Mexico as an innovator, leading the nation in protecting, preserving and interpreting the state's wealth of cultural resources. Looting and vandalism at archaeological sites in New Mexico and the Southwest led to the nation's first body of preservation law — the Antiquities Act of 1906 — and we see the state continuing as a preservation leader as we face the challenges and opportunities presented by oil-and-gas exploration, population growth and heritage tourism.

In the future, historic preservation will be woven into history classes at the university and high school level, providing educators information about their communities that helps connect students with New Mexico's patrimony, and provides a stronger foundation for understanding the future. Already, Project Archaeology offers training to teachers of fourth-through-seventh grade students, to help them develop an appreciation of New Mexico's earliest cultures. Preservation and regionalism have been taught in special sessions at the university level.

The overall inventory of cultural resources will greatly expand as communities, private business, individuals and governmental entities step forward to undertake comprehensive surveys of our past. Updated and new information already is being entered into the New Mexico Cultural Resources Information System database maintained by HPD's Archaeological Records Management Section. NMCRIS will synthesize existing surveys and context statements, connecting the historic record to the vast array of resources available to the public, industry and scholars.

Thanks to greater access to web-dynamic information, communities will more ably make informed planning decisions to ensure New Mexico is a healthy, environmentally sound and culturally rich place to live. New Mexico's local, state and federal leadership will advocate for the state's diverse connection to our past.

State preservation funds will more actively provide monies to state and local governments for cultural-resource projects. We aim for a multi-million-dollar loan fund available to historic-property owners. The ceiling on New Mexico's Cultural Property Income Tax Credit will be raised to \$50,000 and a rebate provided for low-income owners of historic properties.

New Mexico will be recognized as a nationwide leader in responding to global warming while caring for cultural resources. We recently have introduced energy-efficiency measures into historic buildings, and received the Leadership in Energy and Environmental Design Standard's silver and gold certifications. Future restorations will strive for the highest platinum certification.

As we continue to plan for the preservation of the defining characteristics of our communities — and prepare to celebrate New Mexico's first 100 years of statehood — by identifying remarkable structures and achievements from our past, we hope this publication proves to be a useful resource tool and guide to the future. Through partnerships among business, government, individuals and organizations, we can continue to identify the historic resources that will allow us to better preserve the quality of life offered in New Mexico through the twenty-first century.

A Plan for New Mexico, 2007 – 2011

Table of Contents

Executive Summary	1
Goals and Objectives	3
Priorities for the next five years	
Public Participation	7
Trends Identified through the Questionnaire	
Program Highlights	9
Cultural Properties Review Committee	
State and National Registers	
Funding Preservation	11
Tax Credits and Loans	
Certified Local Governments	
Grants	
Save America's Treasures & Preserve America	
Incorporating Historic Preservation into Community Planning	15
Streamlining the Process	
Oil and Gas Industry	
Archaeological Permits	
Reviewing Projects	
Cultural Resource Database	
Tribal Consultation	
HPD Operations	
MainStreet and Community	
Congress Helps Communities Advance Preservation	
Expanding Public Knowledge	23
Heritage Preservation Month	
Archaeology Fair	
SiteWatch	
Media Highlights	
Cultural Resources in New Mexico	25
An Historic Context	
<i>Success Stories</i>	
Small Town Movie Theaters Register Nomination	2
Amy Biehl High School, Albuquerque	6
The Historic Tapia House and Tax Credits	12
Bringing Back the Eklund Hotel	14
Save America's Treasures Grants in New Mexico	14
Construction Reveals a Community's Past	16
Practical Uses of Electronic Data	18
Model Consultation Developed in Santa Fe	20
Preservation Partners Directory	31
Bibliography	34

Executive Summary

Ask most any resident or visitor in the Land of Enchantment about the importance of cultural resources and you will hear a variety of reasons explaining their value and the ways they enrich our daily lives. These resources help define, educate and inspire us as a society. By giving us a better understanding of our shared heritage, historic structures and buildings, archaeological sites, cultural landscapes, and the preservation of traditions help us better comprehend the issues we face today as a state and a nation. At its core, preservation is a democratic process and one that fosters civic engagement.

New Mexico's cultural resources vary widely. They are documented in the 1,900 listings in the State Register of Cultural Properties and inventoried in the 154,000 archaeological sites found in our Archaeological Resources Management Section database. These resources tell the story of millennia-old human occupation in New Mexico. From the birthplace of American rocketry at White Sands Missile Range — a registered Cold War site — to the 11,000 year-old communities of hunters and gatherers at Black Water Draw, New Mexico cultural resources weave the fabric of the state's heritage.



Planning the stabilization of the Navajo pueblo, Three Corn Ruin, was made possible, in part, through an HPD-administered grant.

The Historic Preservation Division is New Mexico's designated State Historic Preservation Office under the National Historic Preservation Act. HPD administers state and federal preservation programs, which include identifying and documenting historic and archaeological resources, managing databases and archives of cultural sites, reviewing state and federally assisted projects, outreach and education about cultural resources, and managing financial-incentive programs.

Identifying, evaluating and nominating resources is an ongoing partnership among the private sector and local, state and federal govern-

ments. It is possible to plan for the preservation of our environment, communities and overall quality of life when we are aware of the resources that comprise them. A significant economic tool, preservation plays an integral role in revitalizing neighborhoods and business districts statewide.

From data compiled by the Department of Cultural Affairs, we know cultural activities in New Mexico have a \$2.5-billion impact on the state's economy, employ more than 32,000 people and provide \$500 million in income each year. Cultural tourism generated more than \$600 million in 2003 and comprised New Mexico's largest employer. Historic preservation's contribution to making this possible is immeasurable, beginning from the early days of preserving sites such as the Palace of the Governors on Santa Fe Plaza or Chaco Culture National Historical Park, to the tax credit projects we administer that preserve our sense of place, improve property values and help put historic architecture into current usage.

Cultural resources give us a sense of place and guide our journey from the past to the future. We look forward to the continued advocacy and involvement of our partners in preservation, and invite readers to use *Preserving the Enchantment: Preservation in New Mexico, 2007-2011* as a planning tool in future development in our state.

Success Story

Movie Theaters in New Mexico Register Nomination

Most of them are individually owned or family run out of love for a small-town tradition that has all but died in most New Mexico communities. Some are empty, but all remain crowning architectural landmarks of their downtowns and main streets.



small-town theaters in New Mexico that was listed to the State and National Registers in 2006. The architectural styles are as disparate as El Raton's Gothic Revival theater with its atmospheric ceiling, to the stripped-down modernism of Lovington's Lea Theater and its stand-alone ticket booth beneath a recessed entry. In all, six movie theaters — the Lyceum and State in Clovis, the Luna in Clayton, and the Odeon in Tucumcari round out the balance — were listed in the State and National registers.

The movie theaters built between 1916 and 1948 comprised a multiple-property nomination honoring

The nomination recognizes ongoing efforts to preserve the architectural character of the theaters and the roles they have played as community centers and sources of community pride. Each of the six theaters has a glorious past. The Register nomination is a step toward renewed community recognition, new financial sources for their continued maintenance and use, and the return of these early entertainment and architectural gems to center stage.



Goals and Objectives

Priorities for the Next Five Years

Every five years, HPD collaborates with partners and friends to formulate a vision and priorities that will guide preservation activities for the next five years. HPD sought participation from New Mexicans at meetings, conferences, workshops and through a questionnaire that was mailed to the 3,000 subscribers of our bi-monthly newsletter *Preservation New Mexico*. The questionnaire also was posted on our web site, distributed at outreach events and when providing technical assistance. Feedback from the public and from our preservation partners has been a key component in the development of the plan.

Based on the responses we received, HPD was on the right course with the goals it set five years ago in its 2002 preservation plan. The goals and objectives outlined below represent the desires of a wide range of preservation interests around the state and are meant to guide preservation planning, cooperation and other activities in New Mexico for the next five years. HPD maintains continuous contact with the public to help ensure our goals and objectives reflect community preservation needs.

I. Expand and strengthen public knowledge

- Inform stakeholders, the public and government about New Mexico's cultural resources, HPD's programs to preserve them and their benefits to its citizens.
- Integrate historic preservation into the curricula at all levels of education by providing technical assistance and outreach materials at the university level, and other educational programs in elementary and secondary schools.
- Collaborate with stakeholders to highlight and identify best practices for productive use and greater appreciation of historic properties.
- Foster the study, dissemination and preservation of the state's diverse cultural heritage.
- Encourage more participation in Heritage Preservation Month, SiteWatch and Archaeology Fair to raise awareness of and honor our shared cultural heritage.
- Broaden the scope of resources listed in the State and National registers, and maintain and update current listings.
- Increase the maintenance and distribution of cultural property information by improving web-based databases for professional and public use to enhance preservation planning.
- Position historic preservation prominently in the celebration of New Mexico's Centennial in 2012.

A Youth Conservation Corps student smooths caliche into forms to build adobe bricks for restoration of the ca. 1840 Hubbell House. A partnership between the State Legislature, Bernalillo County, Cornerstones Community Partnerships, New Mexico Heritage Preservation Alliance and HPD helped land the restoration an episode on Save America's Treasures *Home and Garden* television show.



II. Fund historic preservation

- Stimulate economic development with increased technical expertise, grant monies and financial incentives.
- Establish adequate legislative and congressional funding to better achieve the mandates of state and federal preservation laws.
- Increase public and private funding to promote the benefits of preservation.
- Explore new and innovative funding sources to support cultural heritage initiatives, including permanent state grants to supplement the federal Historic Preservation Fund monies HPD distributes as grants.
- Quantify the impact of cultural resources on the state's economy and achieve greater cost effectiveness for preservation activities.

III. Incorporate historic preservation into community planning

- Develop a comprehensive inventory of historic properties to record, organize, digitize, and disseminate information in meeting the requirements of the National Historic Preservation Act and the New Mexico Cultural Properties Act.
- Improve the coordination of activities under the National Historic Preservation Act and the New Mexico Cultural Properties Act to assist governmental agencies in fulfilling their stewardship responsibilities.
- Work with communities to include historic preservation in comprehensive plans and at all levels of planning.
- Foster collaboration and exchange of information among planners, planning and zoning commissions, land owners and other interested preservation partners.
- Balance growth with preservation by emphasizing preservation as a tool for maintaining and revitalizing communities.
- Encourage local participation and responsibility for preserving cultural resources.
- Identify cultural resources and expand historic and archaeological information by recording undocumented and under-represented resources in surveys, inventories and in State and National Register nominations.

Goals and Objectives

IV. Strengthen advocacy and legal protections for cultural resources

- Advance public policies to promote the protection, enhancement, and productive use of historic resources to support and encourage historic preservation activities carried out by federal, state, local, and tribal governments, and the private sector.
- Educate and advocate for legal protections at the local level, including comprehensive preservation plans and ordinances to protect diverse cultural resources.
- Investigate avenues for providing confidentiality for culturally sensitive information.
- Improve compliance with and enforcement of preservation laws.
- Protect cultural resources by assessing their condition and by evaluating the effects of population growth, and business and industry expansion on them.

V. Expand and strengthen the network of preservation organizations and individuals statewide for a better cross-representation by age, ability, and cultural and ethnic heritage

- Increase public-private partnerships by fostering advocacy and collaboration among diverse preservation groups and individuals.
- Create opportunities and provide training and skills for a wider range of people to participate in historic preservation.
- Develop a far-reaching statewide preservation network.
- Expand and strengthen inter-governmental cooperation among local, state, federal and tribal agencies.

Success Story



Amy Biehl High School was named for the young woman who attended high school in New Mexico and died tragically in 1993 while working to end apartheid in South Africa.

Amy Biehl High School

Wide, marble hallways that lead to steep, twisting stairs, and hand-carved doors that open into large rooms topped with crown molding are not the usual template for a new school building. But for Amy Biehl High School, considered one of Albuquerque's most innovative charter high schools, it was the perfect fit.

Albuquerque's federal building, once the crown of Banker's Row, was completed in 1911— one year before statehood — in the grand, Federal style that typified public buildings of its time. Built as a courthouse and the territory's central post office, the building later became an office building, then fell into disuse. Although its large rooms and grand halls dimmed with age, they survived largely intact.

When Tony Monfiletto, Amy Biehl's chief executive officer, came upon the building as a potential new location for his growing school, he, his faculty and students were fascinated with the prospect of moving in, and began working with the U.S. General Services Administration and HPD to retain its original features and tailor them to student needs. The fit was so successful that the project landed a National Trust for Historic Preservation Awards for HPD, GSA and the school in 2006, and the Cultural Properties Review Committee awarded the project and architects Hartman + Majewski Design Group a Heritage Preservation Award the same year.

Amy Biehl is the first high school to operate in downtown Albuquerque in 30 years. The project helps debunk the myth that rehabilitating an older building is far costlier than new construction. Figures provided HPD by Monfiletto put the rehab costs of Amy Biehl at approximately \$16,000 per student while a new high school in Albuquerque cost approximately \$55,000 per student. Amy Biehl has a 20-year lease instead of a mortgage, and the project did not require a land purchase.

Public Participation

Trends from the questionnaire identify Challenges

We asked questions of our preservation partners to learn more about what is important in their communities. Twenty-three of the state's 33 counties, attendees of the New Mexico Heritage Preservation Alliance conference of 2006 in Gallup; the Archaeological Society of New Mexico, our Certified Local Governments and New Mexico MainStreet responded to our questionnaire.

To better understand what preservation faces in New Mexico over the next five years, we identified the following issues as challenges and opportunities for developing strategy.

1. Educate the general public about New Mexico's cultural heritage, the value of historic resources and the benefits of historic preservation.

Challenges

- Lack of proper maintenance for and demolition of historic buildings in New Mexico communities.
- Destruction of archaeological sites through urban development and by looting in rural areas.
- Disappearing or significantly altered cultural landscapes.
- Geographic distances present challenges for public outreach, education and partnering.
- Broad historic preservation coalitions have had limited success with outreach and partnering in rural areas.

Opportunities

- Promote partnerships between historic preservation groups, open space conservancies and organizations to increase awareness of historic preservation and to purchase and maintain important sites and cultural landscapes.
- Direct funding toward furthering education and training initiatives for preservation statewide.
- Support new state legislation that mandates teaching twentieth-century history in ninth grade.
- Generate greater media outreach through new means of communication to provide the public with information quickly and effectively.
- Provide more creative educational tools using twenty-first century technology.
- Expand state tax credits and seek other incentives to encourage preservation at the local level.

2. Historic resources play a central role in New Mexico tourism, one of the state's largest industries.

Challenges

- Tourism may contribute to the deterioration of historic resources statewide.
- Current levels of state and federal funding are inadequate for our state's preservation efforts.

Opportunities

- Economic benefits from downtown revitalization enhance development and heritage tourism.
- Heritage tourism offers a high-quality, educational experience for our citizens and visitors alike.
- Work with Departments of Tourism and Economic Development to leverage dollars for preservation projects.
- Work with Tribes, CLGs and MainStreet communities to become Preserve America Communities.

3. Integrate more preservation into agency, community and citizen planning.

Challenges

- Planning at the state level is not done in a centralized fashion and is underfunded.
- Lack of comprehensive plans for historic preservation at the local level can hamper government efforts to enforce land-use policies, zoning, capital improvements, building codes and preservation of cultural resources.

Opportunities

- Continue funding and guidance to Certified Local Government communities for comprehensive planning.
- Integrate new and improved technology to distribute confidential cultural-resource information to planners.
- Expand the NMCRIS database to include State and National Register listed properties.

Most of Kenna's 14 residents gathered with HPD to provide local oral history for the development of the State and National Register nomination of the Midway Service Station, the sole surviving building in Kenna following a Father's Day fire that destroyed the rest of the town in 2000.



Challenges and Opportunities

4. Preservation is costly and beyond the means of many.

Challenges

- New Mexico incomes are below the national average, making it difficult to support preservation initiatives.

Opportunities

- Expand available preservation incentives at the federal and state levels with a focus on low-income residents.
- Increase support from private foundations and donors of historic preservation initiatives.
- Create more private financial incentives to encourage rehabilitation of privately held property.
- Create incentives to encourage preservation of open space and rural resources.
- Seek funding for bricks-and-mortar projects.

5. Historic preservation must be grounded in sensitivity to our multi-cultural heritage.

Challenges

- Lack of awareness and appreciation of the cultural heritage of New Mexicans, past and present.
- Lack of equal representation of people of various ages, abilities, and cultural and ethnic groups in decision-making positions within the preservation community.

Opportunities

- Educate New Mexicans through media, publications, community organizations and preservation activities.
- Encourage people of diverse backgrounds to work on preservation projects in their communities.
- Record and nominate undocumented and under-represented cultural resources to the Registers.
- Encourage more Tribal Historic Preservation Offices to bring preservation concerns and issues to the tribal level and to protect important traditional cultural properties.
- Expand the concept of "historic properties" beyond buildings and archaeology to recognize living cultural traditions including oral histories, history, folklore and traditional lifeways.
- Support craftsmanship, and working with traditional materials.

6. Business activities that are integral to New Mexico's economy affect our cultural resources.

Challenges

- Federal, state, and local activities can negatively impact cultural resources and landscapes within the state.
- Potential damage or loss of properties is not covered by federal, state or local government review.

Opportunities

- Business activities can present an opportunity for preservation under federal and state laws.
- Encourage New Mexico businesses, farms and ranches to help protect and preserve our cultural heritage.
- Work with the oil-and-gas industry to protect cultural resources.

7. Growth and redistribution of population alters our cultural patterns and affects our architectural, archaeological and cultural heritage.

Challenges

- Future statewide population growth, especially in southern New Mexico, negatively impacts resources and preservation efforts.
- Urban sprawl is an increasing threat to cultural resources.
- Gentrification has increased property taxes and housing prices, forcing some long-term residents to leave their properties, thereby altering the traditional cultural fabric of an area.

Opportunities

- Encourage communities and organizations to create and enforce legal protections and improve local plans and ordinances when addressing growth and land-use issues.
- Work with government agencies and private organizations to rehabilitate historic buildings and protect archaeological sites statewide.
- Work with the state Economic Development Department and Department of Finance and Administration to utilize preservation possibilities in the Local Development Act.

Program Highlights

Cultural Properties Review Committee



Established under the New Mexico Cultural Properties Act, the Cultural Properties Review Committee is the policy and oversight body of HPD. The Legislature added two positions in 2005 at the division's request to achieve broader representation of preservation interests. A tribal member and a citizen member now serve with architects, architectural historians, archaeologists and the state historian. Except for the state historian — a statutory position — all CPRC members are appointed by New Mexico's governor.

The CPRC lists properties to the State Register and recommends nominations to forward to the Keeper of the National Register. It grants permits for archaeological surveys and excavations, and reviews and approves state income tax credits for rehabilitation of registered properties. The CPRC also reviews text for Official Scenic Historic Markers and votes on nominations for the annual Heritage Preservation Awards. The panel influences preservation policy statewide.

The committee has placed a stronger emphasis on tribal consultation than in past years and has broadened the scope of cultural resources considered for preservation beyond archaeological sites and buildings, and often with an eye on heritage tourism. Cultural landscapes, acequias, oral traditions and indigenous language receive more emphasis than in the past.

State and National Register Highlights

New Mexico is one of a handful of states with a State Register. Created in part because of an outcry in the late 1960s over the looting of prehistoric resources, New Mexico's State Register of Cultural Properties made it possible to honor resources whose significance is too localized to meet the criteria of the National Register of Historic Places. Yet, many state nominations are found in the National Register. Our State Register also makes possible the State Cultural Property Tax Credit and Preservation Loan Fund for the restoration of residential and commercial buildings.

Recent nominations honored trade and travel routes. We commemorated Route 66 neon signs, motels and businesses, bridges, trading posts, and the routes themselves to illustrate the substantial role roads, trails, rails and rivers play in forming history. For instance, the "Homestead and Ranch School Era Roads and Trails of Los Alamos" National Register nomination linked three histories. Roads built by seasonal Hispanic homesteaders were linked to more engineered trails and roads built by the wealthy students at Los Alamos Boys Ranch. Several of these routes followed trails first established by Puebloan cultures, and all were commandeered for the Manhattan project.

The New Deal changed the face of New Mexico. Many of the associated resources still are in use today, although some had been taken for granted, neglected or simply painted over as was the case with several WPA murals and art. Multiple and thematic listings of New Deal resources such as women's clubs, libraries and other facilities were punctuated by mammoth achievements such as

The Ojo Caliente Mineral Springs Barn is recognized as one of the few round barns left in the country, and quite possibly the only one made of adobe. Listed in both the State and National registers, it was eligible to receive federal and state tax credits, which enabled its restoration and adaptive re-use as a resort and conference center.



building Conchas Dam — its face actually stretches farther across the landscape than that of Hoover Dam — in East Central New Mexico.

The important contributions of artists and writers who worked in New Mexico were recognized in nominations such as the D. H. Lawrence Ranch, in San Cristobal, and the National Historic Landmark status given the home of Pulitzer Prize-winning author Ernie Pyle in Albuquerque. In all, the CPRC listed 102 nominations, bringing the total number of listings to 1,900 and the number of properties represented in the State Register to more than 8,000.

State and National Register Nominations 2002 – 2006

2 0 0 6

Hobbs Downtown Historic District
 Huning Highlands Conoco Service Station
 Arroyo Hondo Pueblo
 Los Alamos Addition
 Movie Theaters in New Mexico, 1905 to 1960
 (Multiple Property Listing: El Raton, Lea, Luna,
 Lyceum, Odeon and State theaters)
 Glenrio Historic District
 Manuel Martinez Sr. House
 James J. Cassidy House
 Bernard J. Beimer Residence
 Tijeras Pueblo National Archaeological District

2 0 0 5

Cousins Bros. Trading Post
 Bowlin's Old Crater Trading Post
 New Mexico Madonna of the Trail
 Cactus Motor Lodge
 Commercial Hotel
 Matthew Elmore Sewalt-Waits House
 Eanger Irving Couse House and Studio & Joseph
 Henry Sharp Studio (National Register)
 Pino Family Hispanic Homestead
 James J. Cassidy House
 Summerford Mountain Archaeological District
 Bentley Store Complex
 Hot Springs Bathhouse, Commercial and Main
 Street State HD in Truth or Consequences (NR)
 J.R. Willis House and La Miradora Apartments

2 0 0 4

Paden Drugstore
 Hot Springs Bathhouse & Commercial Nat'l HD in
 Truth or Consequences (State Register)
 Fairview Cemetery
 Midway Service Station
 Coalition and Classic Period Cultural Properties of
 the Pajarito Plateau, A.D. 1200-1600
 Immanuel Presbyterian Church
 Saint Joseph Apache Mission Church
 Daniel T. Kelly Residence
 Ozark Trails Marker at Lake Arthur
 Eanger Irving Couse House and Studio
 Roswell Warehouse Historic District
 Albert Royal Carter House
 Red River Community House

2 0 0 3

Thomas Branigan Memorial Library
 A.P. Jackson House
 Martinez House/Perea Hall
 La Capilla de San Antonio de Los Lentos
 Aztec North Mesa Archaeological District
 Los Alamos United States Post Office

Lordsburg-Hidalgo County Library
 Rio Grande Theatre
 D.H. Lawrence Ranch Historic District
 Everret Jones Residence
 Rolland's Drug Store
 Southern Union Gas Building
 Manzano Court Historic District
 De Anza Motor Lodge
 Old Peralta School
 Carrie Tingley Hospital for Crippled Children
 Bayo Road
 Ojo Caliente Mineral Springs Barn
 Carrizozo Woman's Club
 Silver City Woman's Club
 New Mexico Federation of Women's Club Buildings
 in New Mexico (MPL)
 Phillips Chapel, CME Church
 Homestead and Ranch School Era Roads and Trails
 of Los Alamos, New Mexico (MPL)
 Fort McRae (LA 4983)
 Route 66 and National Old Trails Road Nat'l Historic
 District at La Bajada (MPL, Santa Fe Vicinity)
 Alamogordo Woman's Club
 Homestead Crossing
 Roybal Road
 Ranch School Trails in Los Alamos
 Lujan Road
 Gonzales Road
 Camp Hamilton Road
 Beanfield Notch Road
 Fort Sumner Woman's Club
 Col. Etienne Bujac Armadine Estate
 Beanfield Mesa Road

2 0 0 2

Grant Road
 Ranchito de Natividad
 Buildings Designed by John Gaw Meem (MPL)
 Otero's 66 Service Station
 Albert Schmidt Residence and Studio
 New Mexico Public Welfare Building
 Aldo Leopold Neighborhood National Register HD
 Don Gaspar Bridge
 Tile House
 Southwestern Sheep-Breeding Lab HD
 Robert and Mary Tansill House
 Neon Signs Along Route 66 in New Mexico (MPL)
 Newberry Farm
 St. Anne's Chapel
 Farmington Downtown National HD
 Tecolote Pueblo Site
 Clayton Public Library
 Diamond Tail Farmsteads and Fieldhouses
 Neon Signs Along Route 66 in New Mexico (MPL by
 county: McKinley, Cibola, Bernalillo,
 Torrance, Bernalillo, Quay, Guadalupe and Union)
 Stalder Mercantile
 Goodson Memorial School

Funding Preservation

Tax Credits & Loans

In the last five years, approved state tax credits totaled \$1.4 million and spurred \$10.3 million in construction statewide, largely on historic residences, with some commercial projects using state and federal credits. Nearly \$7.6 million in federal credits were approved for \$22 million in construction that put historic buildings back on the tax rolls and created new economic development opportunities.

HPD saw growth in the use of federal tax credits in large, commercial developments and adaptive re-use projects such as the lofts conversion at old Albuquerque High School, which spawned renewed commercial development in the Huning Highlands Historic District. In Clayton, population 1,900, state and federal tax credits combined with HPD's Preservation Loan Fund gave a \$720,000 boost to the \$2.4-million rehabilitation of the ca. 1900 Eklund Hotel, which became a regional heritage tourism destination for persons exploring the legends and history of the Wild West.

HPD administers a fifty-percent state tax credit in partnership with the Taxation and Revenue Department. The credit can be taken over five years with a limit of \$25,000 in credits per project, although one building can be the subject of two or more projects.

Between 2002 and 2006 the Historic Preservation Loan fund made three loans totaling \$254,267.00 in Clayton, Santa Fe and Albuquerque. HPD loans are at a fixed three-percent rate.

Certified Local Government

Local initiative might be a more descriptive name for this program, which puts municipal and county governments in the driver's seat of local preservation.

Created in an amendment to the National Historic Preservation Act, the CLG program reflected the need of local governments to have a stronger voice in federal projects and preservation matters. Communities develop local ordinances to protect historic resources and form design review boards that monitor activity in historic districts. Often part of a local planning office, CLGs are eligible for a portion of the approximately \$85,000 HPD sets aside each year from the federal Historic Preservation Fund as grants.



Pancho Villa flanked by two of his officers. Columbus conducts walking tours and holds events related to Pancho Villa's March 9, 1916, raid of Columbus, which was the last invasion of U.S. soil by a military force.

HPD expanded the program adding Silver City in 2000 and Columbus in 2004. The additions brought to eight the number of CLGs, with Albuquerque, Deming, Las Vegas, Lincoln County, Santa Fe, and Taos remaining active participants in the program.

In the last two years, HPD worked with Los Alamos, Española, Mesilla, Los Lunas, Clovis, Bernalillo and Grants to join the program. HPD provided technical assistance for the development of pending local ordinances to create CLGs in Los Alamos County and Espanola.

The CLGs developed innovative projects with grant funds. Walking tours, historic district brochures, hosting the annual New Mexico Heritage Preservation Alliance conference, tax credit workshops and educational opportunities for design-review board members all have been funded in recent years.

Success Story

Historic Tapia House saved in Las Vegas using tax credits

Significant Project Components

Structural components of roof rebuilt

Traditional mud plaster used on exterior

New walls, floor joists, hardwood floors and ceilings

Qualifies for \$25,000 state income tax credit

Qualifies for \$15,400 federal income tax credit

ceiling and attic floor, and the exterior mud-plastered by hand.

The monumental undertaking cost Susan Swan and her business partner \$77,000, but because the Secretary of the Interior's Standards were followed and the project planned for an income-producing property, \$25,000 in state income tax credits were approved along with \$15,400 in federal credits. While New Mexico tax credits can be used in residential and commercial ventures on historic buildings, the federal credit is available only for properties that produce an income. In a case like the Tapia House, combining the two programs essentially covered half the rehabilitation costs.



Windows were dismantled and rebuilt.

The Tapia House was built ca. 1860-1870 in a U-shape with a zaguan, or exterior pass to a one-time courtyard. One wing of the house was previously destroyed, leaving an L-shape. The materials and construction techniques used in the Tapia House restoration were classic examples of the architectural character and craftsmanship that made the district historic. HPD hopes to encourage more restorations of this quality as the number of tax-credit projects increases, but the use of modern materials becomes more prevalent. **photos: Susan Swan**

A rebuilt wall with original-style molding and a salvaged door inside.

Gutted by a previous owner and in danger of collapse, a mid-nineteenth-century adobe home in Las Vegas was rehabilitated into a rental property in 2006 using state and federal income tax credits.

The owners of the house in the Old Town National Historic District rebuilt missing interior walls using “shadow lines” that hinted where walls once stood. Missing key structural components of the roof were fitted into place, and interior ceiling vigas that had been cut off were replaced with hand-cut ponderosa pine logs. Heavy wood planks were laid, restoring the



Funding Preservation

Grants

An HPD grant that helped fund a documentary on the restoration of Route 66 neon signs landed the division in the annals of show business. The documentary, *Route 66, the Neon Road*, won the 2004 Rocky Mountain Emmy for best cultural documentary, and brought increased attention to efforts to preserve the legacy of the Mother Road and her remaining icons.



HPD issues grants ranging from \$4,000 – \$7,500 each year for writing State and National Register nominations, documentary film work, archaeological research, developing planning documents for restorations and rehabilitations, and other preservation-related work.

On their own they may not be enough to complete a project. But, as was the case with the PBS award-winning Route 66 documentary, which also was funded by the Route 66 Neon Restoration Project of New Mexico, combining matches of donated talent, work and outside funding can produce significant results.

HPD grants are part of a set-aside from its annual appropriation from the federal Historic Preservation Fund. The division is working with the office of Governor Bill Richardson and the State Legislature to initiate an annual state appropriation to supplement the HPD funded grants.

Route 66 in Tucumcari. The ten actual sign restorations were funded by the NPS Route 66 Corridor Preservation Office.

Save America's Treasures & Preserve America

Los Alamos National Laboratory's restoration of Manhattan Project sites was one of the first recipients of a federal SAT grant in 1998. Since then, preservation statewide has benefited from \$4.6 million in grants that have made it possible to restore and rehabilitate sites as diverse as San Estéban del Rey at Acoma, Depression-era national park structures and the rare New Mexico example of a Greek Revival courthouse in Deming.

Silver City and Las Vegas were designated Preserve America communities in 2006 and two New Mexico preservation projects received grants. Silver City received \$20,025 to complete a master plan for its 1887 sandstone Water Works building to become an educational center and tourist destination. A second grant funded the first joint venture between Colorado and New Mexico cultural-resource management agencies to stage a heritage tourism workshop to explore opportunities presented by more remote archaeological sites.



V Site, where the first atomic bomb was developed. The High Bay building is the sole remaining V-Site building following the 2000 Cerro Grande forest fire. High Bay's restoration completed in 2006 opened doors to new ways of thinking about buildings that should be preserved.

Success Stories

Bringing Back the Eklund Hotel



The east facade showing restored windows. The hotel was built in three phases beginning in 1892.

The Eklund Hotel on Clayton's Main Street, in Union County, once was known to travelers along the Colorado and Southern Railroad as "the finest hotel between Fort Worth and Denver." Completed in 1905, it was the first hotel in Clayton to have electric lights and in-room telephones. Black Jack Ketchum was hanged for train robbery nearby and a bullet hole from his gun still is easily visible in the saloon's tin ceiling.

The Eklund was listed in the State Register in 1971, but the guests stopped coming, and by 1973 the hotel closed. Memories lingered, and nineteen years later, area citizens formed Eklund Association, Inc., bought the hotel, restored 26 rooms, the restaurant and saloon.

HPD loaned \$200,000, provided technical expertise for state and federal tax credit eligibility, and the U.S. Department of Agriculture Rural Business Cooperative gave an 80 percent guarantee on a \$2.16-million loan from First National Bank of New Mexico, in Clayton. Construction began in July 2003 and was completed the following April for \$2.4 million.

The 1892 storefront and original windows — some with fire shutters — were restored. When the hotel reopened, the lobby once again became a public gathering place and the guest rooms filled.

Today, the Eklund Hotel draws heritage tourists, overnight guests and contributes to the social and economic vitality of northeastern New Mexico.

Save America's Treasures grants in New Mexico

Save America's Treasures is one of a few providers of grants for bricks-and-mortar rehabilitation

1 9 9 9
Manhattan Project in Los Alamos, \$700,000
2 0 0 0
Feather Cave Complex Collections in Albuquerque, \$75,000
2 0 0 1
San Estéban del Rey Mission at Acoma, \$400,000
2 0 0 2
CCC/WPA Collections in National Parks in Arizona, New Mexico and Colorado, \$125,000
Daisy Decelerator at the U.S. Air Force Base in Alamogordo, \$54,000
Institute of American Indian Arts Museum in Santa Fe, \$250,000
Salmon Ruins at Bloomfield, \$175,000
Roswell Museum, \$338,000
Lincoln Historic District, \$1 million
2 0 0 3
Seton Castle in Santa Fe, \$330,000
Luna County Courthouse in Deming, \$340,000
2 0 0 4
Palace of the Governors Museum Collection in Santa Fe, \$358,000
Picuris Old Village at Peñasco, \$295,000
2 0 0 5
Fort Stanton in Lincoln County, \$210,000
2 0 0 6
San Augustin Mission, Isleta Pueblo, \$150,000



San Estéban del Rey at Acoma

Incorporating Historic Preservation into Community Planning

Streamlining the Process

Oil and Gas Development

As pressure mounts for increased oil-and-gas exploration in New Mexico, more archaeological resources come into play. A two-state pilot study funded by a U.S. Department of Energy grant allowed cultural-resource management consultant Gnomon, Inc., along with SRI foundation, Western GeoArch Research and Red Rock Geological Enterprises, to explore potential responses by working with SHPOs in New Mexico and Wyoming. HPD's electronic database of cultural resources was a key component of the agreement, making it possible to improve planning and access to cultural resources information by agencies and the industry.

BLM and SHPO are discussing how to implement some of the changes that may revolutionize the Section 106 review process in southeastern New Mexico.

Archaeological Permits

HPD and the CPRC issued new rules and regulations covering permits for archaeological work on state land, the first update in 20 years. The new rules ensure archaeological studies on public land conform to the highest professional standards and provide new knowledge of archaeological resources in the state. Permits are issued by the CPRC with concurrence of the SHPO and state archaeologist.

A CPRC task force including HPD staff and archaeologists from three state agencies began the revisions in 2004. Rules for issuing permits, archaeological surveying, testing, excavating and monitoring were rewritten and streamlined. They were implemented in January 2006 following public meetings and a formal hearing.



The north wall of the 400-year-old Palace of the Governors was stripped of its plaster and archaeologists excavated for more than a year behind it in preparation for construction of a new history museum to be completed in 2008. Artifacts recovered dated from 1610 – 1950 and included Spanish cobbled foundation walls, ceramics, human burials, military buttons and bullets. The excavations required a permit from CPRC.

Reviewing Projects

Section 106 consultations were streamlined when new statewide programmatic agreements were reached with partners, including the USDA Forest Service, Region 3; Federal Highway Administration and their state partner the New Mexico Department of Transportation; the Bureau of Land Management and Fort Bliss. Each agreement is tailored to the agency's needs and programs, and highlights opportunities for partnerships with SHPO on education, outreach, training and other cooperative initiatives. One agreement included provisions for adding new program protocols — such as for road maintenance — during the life of the PA. Another streamlining success involved the creation by the National Park Service and SHPO of a new consolidated form to be used for both National Environmental Policy Act and National Historic Preservation Act consultations. The Fort Bliss PA integrates Section 106 into their NEPA process.

Success Story

Construction Reveals Part of a Community's Past

Alamogordo is an army base town experiencing a growth spurt. New residents are drawn in part by the natural, undeveloped recreational opportunities, which rapidly are disappearing in many parts of the Southwest as more lands are given over to modern, urban living.

When a new waterline was needed, city officials determined it most expedient to follow an easement for existing waterlines installed decades ago through the State Register site of one of six Jornada Mogollon villages dating back nearly 2,000 years. They assumed the easement and existing lines meant no undisturbed cultural resources would be found. As a precaution, HPD recommended archaeologists monitor construction.

Early excavation turned all suppositions upside down. Four pit houses were unearthed, eight pits or hearth features revealed and four middens dating from 90 B.C. – 1450 A.D. were discovered. The ancestral remains of 13 people from the Jornada-Mogollon Period also were uncovered.

SWCA Environmental Consultants worked with HPD Services and the city to handle the discoveries. The Prehistoric and Historic Sites Preservation Act requires that if prudent and feasible alternatives are unavailable — and a culturally-sensitive site must become part of a project — all possible planning to preserve and protect the resources and minimize harm to them must be undertaken. SWCA helped the city prepare a preliminary report on the findings, which were presented at the fourteenth Biennial Jornada-Mogollon Conference in 2006.

Alamogordo's handling of the discovery was exceptional, earning the city a Heritage

Preservation Award. The city contacted local media and conducted several public meetings as the ruins were unearthed, in accordance with state law. The city also began planning an interpretive display of the discovery giving new and old residents alike a better understanding of their community.



Archaeologists conduct tests during trenching for the new line.



Incorporating Historic Preservation into Community Planning

Cultural Resource Database

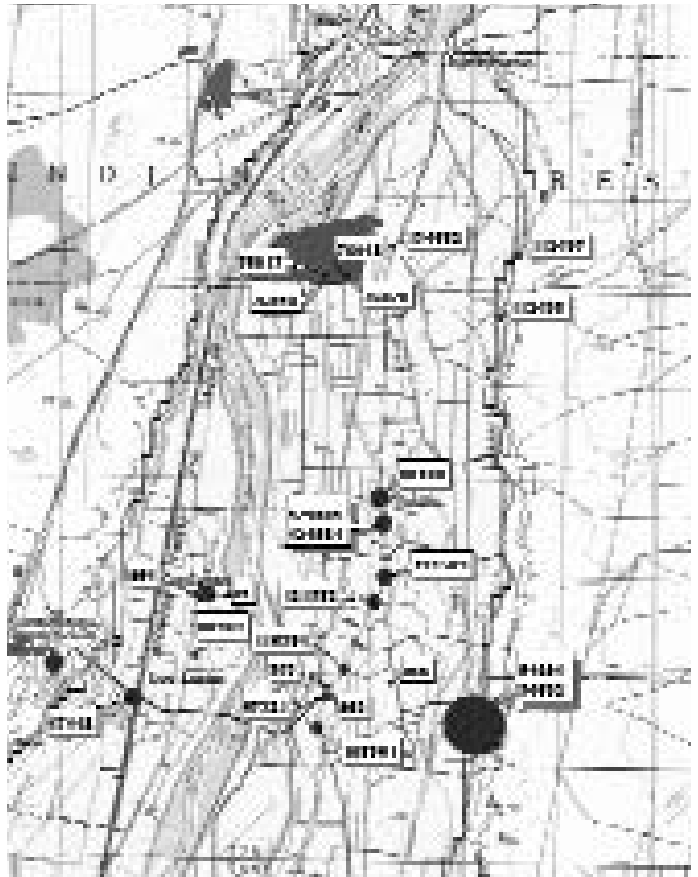
The New Mexico Cultural Resources Information System is the largest electronic database of archaeological sites and cultural resources in the United States. Its maps, surveys and database constantly are revised and enlarged as additional resources from known sites are discovered or new sites identified, usually in the course of the construction of roads, communication networks, energy exploration and other developments.

In turn, NMCRIS is subscribed to by archaeologists, developers, governmental agencies, universities and consultants as a planning tool so cultural sites and resources can be considered early in the research, planning and development of projects.

Since 2002, 19,742 sites were added to the system, along with 20,883 cultural resources surveys that covered 1.5 million acres of land. Each of the sites is represented on NMCRIS maps showing the locations of the resources and previous archaeological inventories.

Housed in HPD's Knowledge and Information Bureau, NMCRIS is managed by the division's Archaeological Records Management Section, and serves as a repository and clearing house of archaeological and cultural resource records.

ARMS maintains data-sharing agreements with numerous state and federal agencies.



Map identifies resources by their Laboratory of Anthropology number and location along a central stretch of the Rio Grande. The map is typical of those found in the NMCRIS database.

Partners in the NMCRIS Database

N.M. Department of Transportation	National Park Service
N.M. State Land Office	Fort Bliss
N.M. Energy, Minerals and Natural Resources	White Sands Missile Range
U.S. Forest Service	U.S. Army Corps of Engineers
U.S. Bureau of Land Management	Kirtland Air Force Base
U.S. Bureau of Reclamation	Holloman Air Force Base
U.S.D.A. Natural Resources Conservation Service	

Success Story

Practical Uses of Electronic Data —

Two applications of NMCRIS

- In the early summer of 2003, a wildfire erupted on Virgin Mesa, near Jemez Springs, in the Santa Fe National Forest. Using the cooperative data-sharing agreement, HPD and U.S. Forest Service archaeologist quickly generated a GIS map layer of archeological sites in the area of the blaze. Fire-fighting personnel were able to coordinate ground-disturbing activities, minimizing direct damage to known prehistoric and historic archeological sites. NMCRIS data were also used to assess post-fire damage.



San Augustin church at Isleta Pueblo dates to 1612, and is one of the two oldest churches in the state. It is one several dozen resources that could be lost from Rio Grande flood waters.

- Several federal and state agencies are working together to improve water management on the Rio Grande. HPD is a member of a cultural resources team for the Upper Rio Grande Water Operations Review that is studying water operations in the Rio Grande basin above Fort Quitman, Texas. Reviewed under authority of the U.S. Army Corps of Engineers, the Bureau of Reclamation, and the New Mexico Interstate Stream Commission, water operations consist primarily of the storage and release of water at reservoirs. HPD's Archaeological Records Management Section used NMCRIS to generate cultural resource information for the entire project area and provided a map identifying known cultural resources that would be inundated by flooding.

Incorporating Historic Preservation into Community Planning

Tribal Consultation

Tribal leadership in preservation expands beyond today's boundaries of reservations to lands still held sacred but that fall under modern political boundaries. Native Americans share responsibility for protecting and preserving significant places and cultural practices.

To this end, HPD greatly increased tribal participation in historic preservation statewide by establishing a tribal liaison at HPD, and by requesting the Legislature expand the statutory positions on the CPRC to include a representative of a New Mexico tribe.

Governor Bill Richardson issued an executive order requiring tribal consultation when sacred sites are affected in repatriation matters, and for selected state agencies when they engage in government-to-government relations.

New Mexico tribes began forming Tribal Historic Preservation Offices shortly after enabling federal legislation was passed in 1992. The Navajo Nation, Mescalero Apache Tribe and Pueblo of Zuni have established THPOs. Pojoaque Pueblo has applied to the National Park Service for THPO status and the pueblos of Acoma, Santa Ana, Ohkay Owingeh, Tesuque and the Jicarilla Apache Tribe are receiving technical assistance from the New Mexico SHPO in applying for THPO status.

Historic Preservation Division Operations

In 2004, HPD reorganized the entire division's approach to preservation. It established seven Preservation Services Zones that correspond with the seven state "Council of Government" districts, and make it possible for staff to specialize and become more familiar with issues in their assigned zones. COGs facilitate contact from municipal, tribal and county governments to the state level, and provide a useful tool for HPD to deliver its programs.

The reorganization established the sections of Communication and Education, Planning, Services, Knowledge and Information and Administration to better focus the delivery of preservation programs and technical assistance, and to emphasize community outreach.

MainStreet and Community

HPD has a tradition of going into communities to assist with local preservation efforts. Staff and CPRC members testify before local city councils on preservation matters, meet with citizens to help form historic districts, and provide documentation and technical assistance for the preservation of historic resources regularly.

The division has partnered with New Mexico MainStreet since the economic revitalization program began operating in the state in 1984. In the last five years, HPD intensified outreach with MainStreet, and in 2004 established Preservation 101 training for communities. In 2006, the division joined national and state consultants in presenting a series of design workshops to newly formed MainStreet organizations that are addressing facade and downtown design issues.

HPD provided information about the State and National registers, financial incentives, grants, and Heritage Preservation Month to Hobbs, Farmington, Clovis, Roswell, Clayton, Artesia, Las Cruces, Las Vegas, Tucumcari, Gallup, Silver City, Bayard, Bernalillo and Portales.



HPD, New Mexico Heritage Preservation Alliance and the CPRC in Roswell for Preservation 101 with Main Street.

Success Story

Model Consultation Developed in Santa Fe



Since 2004 tremendous strides have been made to incorporate tribal consultation into planning decisions for development projects in the Santa Fe. Many construction projects in and around Santa Fe Plaza have exposed pieces of the city's complex archaeological history fueling speculation about the area's earliest inhabitants and the location of Ancestral Puebloan sites. In these heavily developed areas, HPD recommends archaeological studies include test excavation and consultation with nearby

Native American pueblos and tribes as part of the planning process.

Two recent projects in the Capital City, one federal and the other local, were in an area thought to sit on top of the remains of a substantial pueblo and parts of Fort Marcy. Archaeological test excavations at both projects revealed the presence of Ancestral Pueblo residential and ceremonial features, human burials, as well as historic foundations and artifacts associated with Fort Marcy. The Pueblo of Tesuque claimed cultural affiliation with the archaeological sites and human remains.

Consultation associated with Santa Fe Federal Courthouse was exemplary and completed without drawing unwanted attention; unearthed human remains were treated with privacy and respect. The Pueblo of Tesuque and GSA received Heritage Preservation Awards for their efforts, which serve as a model for successful and meaningful tribal consultation.

Tribal consultation was a central part of planning for the new civic center and was incorporated into the permit process for archaeology and the excavation of human remains at the site as required under state law. The CPRC delayed issuance of the permits to allow sufficient time for meaningful consultation between the city and the pueblo. The mayor, members of the city council, and the pueblo's governor and council met to actively participate in the consultation. The scope of the project was scaled back to disturb fewer human remains.

CPRC Chairman Estevan Rael-Gálvez said historic precedent was set when tribal consultation produced an agreement. After a series of meetings, the CPRC unanimously approved the permits. The Santa Fe City Council followed suit and passed a resolution inviting neighboring Native American communities to participate in the planning of city projects.



Incorporating Historic Preservation into Community Planning

Congress Helps Communities Advance Preservation

Through strong grassroots initiatives, New Mexico communities engage in multi-level partnerships with local, state, federal and tribal governments — and public and private interests — to further preservation of the state's vast cultural resources. Many of these partnerships enable economic growth through heritage tourism. Recent acts by Congress, partnerships between BLM, HPD and local-and-state tourism — such as the 2006 heritage tourism workshop sponsored by New Mexico and Colorado oversight agencies — provide a framework to make new initiative possible.

Galisteo Basin Archaeological Sites Protection Act of 2004

In 2004, Congress designated 24 sites south of Santa Fe, including large and small pueblos, spectacular rock art sites and Spanish Colonial settlements, for protection. The act provides an opportunity to preserve and study 400 years of human occupation and community development.

Northern Rio Grande Heritage Area of 2006

The Northern Rio Grande Valley forms one of the nation's most culturally and geographically diverse areas. Designated by Congress as a National Heritage Area in October 2006, legislation authorizes Northern Rio Grande National Heritage Area, Inc., to manage and provide funds to enhance heritage tourism opportunities while improving cultural-resource management and protection for the next 15 years.

Valles Caldera National Preserve



What generally is regarded as the largest volcanic explosion to have occurred in North America created an 89,000-acre depression that evolved into fertile grasslands crisscrossed by streams, and ringed by low peaks. Known as Valles Caldera, it was the subject of a Spanish land grant that became the former Baca Ranch until 1998. Congress acquired the land because of public demand that its unusual natural beauty be preserved. Congress set conditions for the caldera to become a working landscape with preservation funded by user fees administered by the Valles Caldera Trust. HPD consults with the trust on the preservation of cultural landscapes, archaeological sites and remaining structures from the historic Baca Ranch.

Fort Bayard National Historic Landmark

Prompted by strong local support, Congress in a rare move designated Fort Bayard — an important military base in southwestern New Mexico for Buffalo Soldiers following the Civil War and later in fighting the Apache Wars — a National Historic Landmark.

Success Story

St. Joseph Apache Mission



Brother David Paz discovered that if he used a commercial bread-dough mixer he could achieve the perfect consistency for the lime-based mortar used to repoint the church. Portland-based cement had been used in earlier repairs, causing severe damage to some walls.

Soaring more than 100 feet above the floor of a prehistoric ruin and framed by the Sacramento Mountains of southern New Mexico, St. Joseph Apache Mission church took more than two decades to build.

Erected largely by volunteers between World War I and World War II, Father Albert Braun, a strong-willed, young Franciscan from California who served in both world wars, conceived and directed the project. Initial stonework was expertly done by a member of a family of Santa Barbara stonemasons who helped build the Franciscan missions of the West Coast.

Built to resemble the magnificent European cathedrals Fr. Braun saw on his first tour of duty, several walls of expertly mortared hand-cut stone stood the test of time. But later work began to fail in sections, with problems exacerbated by a leaking tile roof and the harsh elements found in the high desert foothills of the Sacramento Mountains of south central New Mexico. At one point, the church was considered for condemnation.

Now six years into a fourteen-year restoration, the grand edifice that memorializes the veterans of two world wars, and united the Mescalero Apache and a strong-willed priest, has received extensive recognition in the form of a National Register nomination and a nationwide fund-raising campaign that has built a \$961,000 restoration fund thus far.

Replacing the red tile roof alone cost \$150,000. To help raise funds, surviving 1930s tiles were removed and transformed into art by the Mescalero. The tiles — painted with representations of the church's stained glass windows, the Apache-Christ icon and other Indian symbols — were sold to pay for replacements.

The community embraced the restoration, not only painting tiles, but devoting countless hours to repointing stonework, replacing the roof, working raffles and writing successful grants. To date, nearly \$880,000 has been spent to restore this grand edifice to the peaceful co-existence of the Mescalero Apache and the Catholic church.



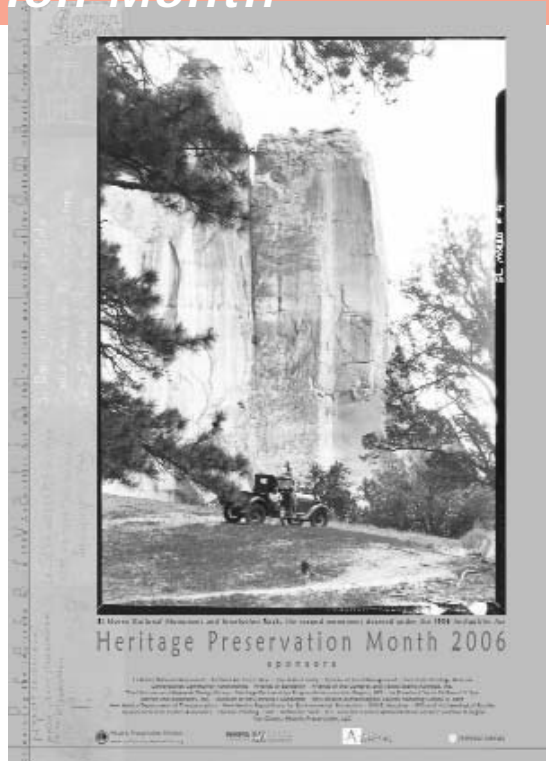
Expand Public Knowledge

Heritage Preservation Month

While many states celebrate Heritage Preservation Week in May, HPD in 2003 expanded festivities to last the entire month. On average, 35 communities host 65 events, which the division compiles and publishes in the *Calendar of Events* and distributes to 5,000 people, tourist centers, event organizers and newsletter subscribers.

HPD's annual posters have won awards, decorate the walls of Congressional offices and have inspired sketching trips for high school art classes. Each year a theme is chosen, with recent ones including the anniversaries of the 1906 Antiquities Act and the National Historic Preservation Act, pilgrimages and historic schools. The poster has a distribution of 5,000, and 2,000 are given away at HPD's annual Home Runs for Heritage baseball game sponsored three-years running by the Albuquerque Isotopes. The poster also promotes local preservation month events and is used for outreach throughout the year.

Also in May, the CPRC presents awards for outstanding achievements in the field of preservation. New award categories were developed three years ago to recognize individuals, organizations, architectural achievement, archaeological research, publishing, and tribal accomplishments; a Lifetime Achievement award was created for individuals who have devoted significant portions of their lives to preserving cultural resources.



Archaeology Fair



Lessons in the ancient art of propelling a spear with an atlatl draw hundreds of participants each year.

Recent Fairs

Clayton	2006
Artesia	2005
Aztec	2004
Tucumcari	2003
Silver City	2002

Each Fall, HPD co-sponsors the New Mexico Archaeology Fair with local chambers of commerce, historical societies, MainStreet organizations and other groups. The fair brings together archaeologists and preservationists from New Mexico and nearby states who host exhibits and demonstrate traditional practices. The popular fair raises awareness of the hosting community's cultural resources, provides an educational opportunity for school-age children and adults, and gives HPD the chance to meet with citizens with local preservation questions and concerns.

The success of the 2003 fair inspired Tucumcari to recreate the event locally. "Quay County Heritage Dayze" was staged by local organizers for the third time in 2006.

Site stewards inspect a defaced petroglyph at Chaco Canyon.



SiteWatch

HPD began offering citizen training of site stewards to monitor culturally sensitive resources in 2003. The program received enthusiastic community support, but in the last year greatly expanded its network of volunteers to the extent that virtually every region of New Mexico has formed a local chapter or is in the process of getting one off the ground.

The number of stewards, now upwards of 200, is a ten-fold increase from 20 volunteers in 2005.

El Camino Real (Socorro)
Central New Mexico (and Albuquerque Archaeological Society)
North Central (Taos)
Chaco Culture National Historic Park and surrounding area
Jemez Mountains (Los Alamos)
Middle Rio Grande (Socorro)
Northwest (Farmington)
Santa Fe — Galisteo
Southeast (Carlsbad)
Southwest (Silver City)
South Central (Las Cruces)
Torrance County (and Torrance County Archaeological Society)

(Northeastern chapters in Las Vegas and Clayton are planned for 2007, and tribal chapters are being encouraged to form.)

In 2006, the Chaco chapter caught teenaged vandals defacing petroglyphs and successfully prosecuted and fined the offenders in the courts. In stark contrast, in the Gila National Forest, a 17-year-old hiker discovered a 700-year-old, largely intact Mogollon pot near the Gila Cliff Dwellings National Monument and immediately reported the find to monument authorities. Because the youth was aware of the significance of the find, archaeologists were able to develop new theories on the work and travel habits of the one-time inhabitants of the cliff dwellings, some three miles from where that pot was discovered.

HPD believes stories like these communicate that outreach and education pay off by developing greater public awareness of the significance of our shared heritage and the need to protect it.

Media Highlights

Outreach became more focused when a public relations position was created in 2003. The division has gained a higher media profile, issued twice the number of press releases and a wider variety of preservation stories are covered by the media than before.

The newsletter *Preservation New Mexico* now is designed in-house and has a circulation of 3,000. A redesigned website provides easier access to programs and forms for financial incentive programs, archaeological permits, Section 106, grants, Heritage Preservation Month, and surveys can be downloaded and returned electronically for the first time. The web site debuted in 2004.

Two new HPD publications are in wide distribution. An overview booklet explains every division program and a second, *Tax Credits and Financial Incentives*, a how-to guide with downloadable forms on a CD.

In partnership with State Tourism, HPD put New Mexico's 500 Official Scenic and Historic markers on a new heritage tourism web site funded by the State Legislature. The new web site brings the 70-year-old historic markers program into the twenty-first century, making it possible to plan heritage tourism stops while sitting at a keyboard before sliding behind the wheel and heading off on a road trip.



Cultural Resources in New Mexico

Prehistoric Context & Resources

Paleoindian Tradition: The two earliest archaeological cultures in North America, Clovis and Folsom, are named after these eastern New Mexico communities, and along with several other cultures, make up the Paleoindian tradition. The cultures shared a hunting and gathering life way that focused on hunting large game animals. The people were nomadic and ranged over huge territories as they followed herds of game. The Paleoindian people occupied New Mexico for roughly 6,000 years, from 11,500-5000 B.C.

Paleoindian sites are very rare, partly because the people were so mobile that they left relatively few traces of their passage and partly because the occupation was so long ago that natural processes of erosion and deposition have destroyed or buried these sites. Only 548 Paleoindian sites have been identified in New Mexico. The most famous are Blackwater Draw, the site of Clovis culture, and Folsom site, where the antiquity of humankind in the New World first was defined.

The Archaic Tradition: by the end of the Paleoindian period, the wetter, cooler Ice Age conditions that had prevailed gave way to a warmer, drier climate. Large game animals became extinct and were replaced by smaller species including bison, deer, and antelope, and plant life changed, adapting to drought conditions. The archaeological cultures that occupied this drier, hotter New Mexico are labeled the Archaic tradition. They lived in New Mexico between approximately 5000 B.C. and the early centuries A.D.

The Archaic people were hunters and gatherers who ranged over vast territories hunting large and small animals and harvesting a variety of plant foods, but tended to return to favorite camping locations to harvest local plants and animals. Features include remains of campfires, concentrations of stone tools and manufacturing debris, roasting and storage pits, and the remains of small, insubstantial shelters.

More than 9,022 Archaic sites have been identified across New Mexico, but the resources of this period are not well known to most people. The most familiar and informative sites are caves and rock shelters such as Bat Cave and Tularosa Cave in the southeast, and Armijo and En Medio shelters in the Rio Puerco drainage.

The Formative Tradition: Many of the prehistoric residents of New Mexico began pursuing a more sedentary lifeway, becoming increasingly dependent on cultivated plants, beans, squash, and corn by the fifth century A.D. Hunting and gathering of wild plant foods remained critical for the people of the Formative tradition, but dependence on cultivated foodstuffs created a very different way of life from that practiced by the Archaic people.

The more settled lifestyle of the Formative people of New Mexico, known as the Ancestral Puebloan culture in the north — and the Mogollon culture in the south — was characterized by larger, more permanent structures. People gathered into villages and larger settlements, and engaged in trade to acquire materials from far beyond their settled villages.

Around A.D. 1100, population levels were high with some settlements housing several hundred people. During the twelfth century, however, the Mogollon and Ancestral Puebloan people began withdrawing from the lower, drier parts of the state and aggregating into larger sites at higher elevations and in areas with more water. By the end of the thirteenth century, even many of the better-watered uplands were abandoned. After 1300, the Formative population was concentrated in very large pueblo sites along the rivers of north-central and central New Mexico and in a few other upland areas in the western and central portions of the state.

Formative sites are well known throughout New Mexico from Burro Springs, a Mogollon village with an estimated 200 structures, to the Chacoan outliers in the northwest to the large Rio Grande

A petroglyph at Mesa Prieta dates from the Archaic Pueblo IV period.



Pueblos of the Galisteo Basin. Over 60,000 Formative period sites have been recorded in New Mexico: 45,307 Ancestral Pueblo, 14,584 Mogollon, 290 Plains Village, and 580 mixed Formative.

The Protohistoric Tradition: During the Protohistoric period of the 1400s and 1500s, the direct ancestors of the modern tribes of New Mexico occupied what are still recognized as their traditional territories. The Pueblo people continued to live in large settlements in the Rio Chama, Rio Grande, Pecos, and Rio Puerco drainages. The Utes first occupied far northwestern New Mexico in the early 1400s; later they would occupy primarily southeastern Utah and portions of Colorado. The Athapaskan-speaking ancestors of the Navajos and Apaches moved into northern, eastern, and southwestern New Mexico beginning in the fifteenth century. The Navajo, Apache, Puebloan, and Ute groups are present in New Mexico today. Other nomadic groups barely survived into the historic period and left no known descendants. Additionally, ecclesiastical records document the trafficking of many nomadic people, including those of Comanche, Pawnee, Cheyenne and Kiowa-Apache descent. Many lived in Hispanic households and were integrated into the community.

Except for the Ancestral Puebloan sites that were occupied at the time of the Spanish exploration of New Mexico, most Protohistoric sites are ephemeral and difficult to recognize, especially those of the nomadic groups, which are hard to distinguish from Archaic sites. Protohistoric sites recorded in New Mexico include approximately 2,872 Pueblo sites, 276 Plains sites, 37 Ute sites, 884 Apache sites, and 16,419 early Navajo sites.

Historic Context and Resources

The Spanish Colonial Period:

Less than fifty years after encountering the native lands and peoples of present-day Mexico, Spanish explorers began to prospect the territory that would eventually become New Mexico. These early explorers were drawn to the north by tales of the Seven Cities of Cibola and by their discoveries of riches elsewhere in the New World.

The first recorded contact between Europeans and native peoples occurred in 1539 when Esteban de Durantes, a Moorish slave, led Fray Marcos de Niza into the area that would become New Mexico. In spite of Fray Marcos de Niza's failure to discover the legendary Cities of Gold, Spanish noblemen, soldiers, clergy, servants and craft peoples began to explore "New Spain" in a series of *entradas* (entrances). By 1598 the Spanish had established a permanent settlement near the pueblo of San Juan, named San Gabriel de Yunque Owinge. As colonization continued, the region received new immigrants and goods from the Spanish Empire by way of El Camino Real de Tierra Adentro trail between Mexico City and the Santa Fe area. During this period Santa Fe was first established, only to be abandoned by the Spanish during the Pueblo Revolt of 1680-1692. In addition to European goods and people, Catholicism, horses, diseases, architecture, plants, and a myriad of cultural traits arrived with the Spanish.



The Palace of the Governors in Santa Fe was built in 1610.

With the exception of the pueblos that were already occupied at Spanish contact, many of the

Cultural Resources in New Mexico

structures and landscapes associated with the Spanish Colonial Period of New Mexico exist today as archaeological resources. These resources are found at Pecos National Historic Park and Salinas Pueblo Missions National Monument, the Spanish Entrada site near Rio Rancho, and as remnants of El Camino Real de Tierra Adentro National Historic Trail. Architectural resources existing from this period include the Spanish mission churches. Using earth, stone, timber, and limited technological resources, the Franciscans and the local population created some of New Mexico's most monumental architecture. Notable among these significant resources are San Estéban del Rey Mission at Acoma pueblo and Santa Cruz de la Cañada.

The traditional building material of the Spanish Colonial Period, as well as later periods, was adobe. The Palace of the Governors in Santa Fe, the oldest known seat of government in the United States, is an example of Spanish Colonial Period adobe construction. Another distinctive Spanish Colonial building practice is the patterning of villages and towns around a central plaza. Examples of this pattern can be seen in Albuquerque Old Town, Mesilla Plaza, and Santa Fe Plaza. Other features associated with this period include the *acequias*, or irrigation canals, built by the early Spanish colonists and native Puebloans. Spanish Colonial Period sites recorded in New Mexico include approximately 51 Pueblo Revolt sites, 579 historic Pueblo (post-revolt) sites, and 1945 Spanish Colonial sites.

The Mexican Period: Before Mexico's independence from Spain, trading in New Mexico had been strictly controlled and enforced by the Spanish. Several unsanctioned Anglo and French trading parties were arrested for violation of Spanish colonial policy. With independence, the Mexican government reversed this policy and encouraged the exchange between Americans and New Mexicans. In 1821, William Becknell led a trading expedition from the Midwest, across the Great Plains into Santa Fe. The establishment of the Santa Fe Trail resulted in an increased availability of consumer goods. Cash, however, was a scarce commodity in New Mexico as the commercial system at this time was a subsistence economy. Citizens traded labor and locally-produced goods with each other. Most regional construction continued to use traditional adobe and rough-hewn timber.



The Santa Fe Trail became a major east-west trade route from Santa Fe to Independence, Missouri.

With Mexican independence, most of the Spanish Catholic missionaries left the territory. The lack of religious authority did not lessen the need for leadership. A unique order of lay clergy, Los Penitentes or La Hermandad de Sangre de Cristo, came to the forefront in New Mexico. The Penitente brothers demonstrated their religious conviction and thereby their holiness through acts of extreme penance and by living their lives in imitation of the life of Christ. These individuals provided social services, led religious processions, officiated on patron Saints Days, and constructed religious structures known as moradas. The design of the East Morada in Abiquiú, associated with the development of Los Penitentes and quite likely built in this period, blends Spanish Colonial mission church characteristics with domestic architecture.

Between 1828 and 1834, during the Mexican period, gold was discovered in the Ortiz Mountains southeast of Santa Fe, and the Cerrillos mining district was established. The discovery of gold, together with the opening of trade between California and New Mexico, resulted in economic growth. At the same time, however, international relations between the United States and Mexico

deteriorated, and in 1846 the United States declared war on Mexico.

The brief period of Mexican control brought relatively few changes in building style or building materials to New Mexico, even though goods and ideas began to enter the state along the Santa Fe Trail. Major resources associated with the Mexican period that exist today include the New Mexico segment of the Santa Fe Trail. Wagon ruts remain visible in several locations between towns and settlements, and many of the places associated with the trail still exist. Homes and commercial buildings owned by people involved in the economic and political development of the Mexican Period are listed in the State and National registers. A representative building of the period is the Severino Martinez House near Taos, which reflects influences from the earlier Spanish Colonial Period. In New Mexico, there are a total of 239 recorded Mexican period sites.

The Territorial Period: When the United States declared war on Mexico, General Stephen Kearny of the United States Army left Fort Leavenworth, Kansas, with an armed force to begin his march on Mexico via the Santa Fe Trail. Fearing the worst, many New Mexicans fled to the countryside, while Santa Fe prepared for invasion. Although a Mexican militia was raised, the Mexican colonial government decided not to defend the capital. By August 1846, Kearny had captured New Mexico without firing a shot. During the Mexican-American War of 1846-1848, the United States military presence in New Mexico grew, and subsequently territorial forts were established across the region.



Railroads made and broke towns and cities in New Mexico. The Cumbres and Toltec is one of the oldest narrow-gauge trains still running in the United States.

Many of these structures were built of native materials and combined both European and native design elements that contributed substantially to the development of “Territorial style” architecture.

Through an agreement with Texas, and the Gadsden Purchase in 1853, the geopolitical boundaries of New Mexico began to resemble those of today. With the American presence and the increased availability of land, the population of New Mexico grew and the ethnic mix began to change. The number of Euro-American New Mexicans increased substantially during the Territorial Period (1848-1912) as the railroad, the Santa Fe Trail and El Camino Real de Tierra Adentro connected the Territory with other regions. Additionally, a small number of former African American slaves remained in New Mexico after defending New Mexico during the Civil War and Apache conflicts. These newcomers brought new architectural styles and different ideas of land ownership. The resulting cultural changes brought into question many of the earlier Spanish and Mexican land grants. Some portions of the original grants changed ownership or became open range. The loss of “common lands” and accompanying historical records was devastating to the Spanish and Mexican people who remained in New Mexico.

The livestock industry also grew to meet the need created by the military presence. Railroad development provided a means of getting animals to eastern and western markets. Ranching and homesteading became a major aspect of the New Mexico lifestyle and economy during the Territorial Period. Some ranch headquarters contain significant concentrations of historic buildings, such as the South Springs Ranch near Roswell and the L.C. Ranch headquarters in Grant County. Other significant districts, such as Lincoln, came into existence during this period and are associated with infamous people such as William Bonney (a.k.a. Billy the Kid) and Sheriff Pat Garrett. Mining

Cultural Resources in New Mexico

towns also were founded across the state including Dawson in the north, Madrid in the central part of the state, and Pinos Altos, Mogollon and Kingston in the south.

The Territorial Period brought major changes to the architecture of New Mexico. Adobe remained a primary building material; however, the addition of decorative elements and their materials accounted for a dynamic change in the way buildings looked. New property types were introduced during this period, most notably military forts such as Fort Union, which exhibited the new stylistic features such as pedimented wood lintels, wood door and window surrounds, and square posts with molding capitals on portals. Glass windowpanes and fired brick coping at the roofline also became common. As the population grew and spread east and west of the Rio Grande, new community plans developed. Some of the population centers established during the Territorial Period were laid out in a “string of pearls” plan while others followed a grid pattern in contrast to the earlier central plaza alignment.

By far, the greatest influence on architectural style and property types before statehood was the railroad. After 1879, community development grid patterns were oriented with the railroad tracks and associated buildings. The railroad radically changed the New Mexico landscape, and introduced the territory to new materials and peoples with new ideas. Italianate commercial buildings appeared first in Las Vegas, and then Albuquerque and Santa Fe. In these towns and others, Queen Anne, Second Empire, Colonial Revival, and Neo-Classical styles from farther east in the United States proliferated. Even in the small rural towns of New Mexico, the railroad impacted building styles. Adobe buildings were Americanized with pitched roofs covered with corrugated metal, turned front porch posts with scroll-saw brackets and screen doors. In New Mexico, 2,956 Hispanic and 12,253 Euro-American sites have been identified archaeologically in New Mexico.

Statehood Period: In 1912, New Mexico became the forty-seventh state to be admitted to the United States of America. Major trends in economic and social developments from 1912 to today are the result of the blending of earlier agricultural and ranching activities, the lure of the Land of Enchantment, and later military developments. Farms and ranches begun in the late Territorial Period were expanded under statehood. New crops and varieties of livestock were introduced into the state. New Mexico became a leader in experimental agricultural education. Mining grew rapidly as the increasingly industrialized Union demanded more and a greater variety of resources.

The appeal of New Mexico began to attract artists, writers, architects, and scientists from across the nation. New Mexico proved to be a fertile ground for artists, writers and scholars like Ansel Adams, Georgia O’Keefe, D. H. Lawrence, Mary Austin, Willa Cather, John Gaw Meem, Mary Colter, and Edgar Lee Hewett.

The economic fluctuations brought about by war and depression had a significant impact on New Mexico. The state benefited substantially from New Deal initiatives in the 1930s and from the war effort during World War II. New Deal art, architecture, and other social initiatives brought a sense of hope to New Mexicans. During the New Deal, the number of roads, bridges, armories, and tourist accommodations multiplied. Art Deco gained popularity as evidenced in the design and construction of the ornate KiMo Theater in Albuquerque. One of the most well-known resources in



Artists continued to flock to New Mexico during the Great Depression. This mural was painted by Boris Deutsch in 1940 for the Truth or Consequences post office.

New Mexico beginning in the late 1920s was Route 66, which traversed the heart of the state and became part of Americana. Road sections, motels, neon signs and gasoline stations associated with Route 66 are now listed in the State and National Registers.

With World War II, New Mexico's national role changed. The state and its rough terrain afforded a safely isolated and remote location for significant military work during World War II, including the development of U.S. nuclear capabilities. This strong military presence has expanded over the years at military facilities such as Los Alamos National Laboratory and White Sands Missile Range. Both of these locations contain significant properties such as Manhattan Project sites that are listed in the National Register and commemorate New Mexico's role in the wartime effort. During the Cold War era, buildings were constructed at all New Mexico military bases to meet growing concerns about nuclear warfare. Kirtland Air Force Base constructed the Trestle, billed as one of the world's largest wooden structures, to test the effects of electro-magnetic pulses on aircraft, and White Sands Missile Range erected range camps for military dispatched to test missiles.

With statehood came a significant increase in government-acquired and government-constructed properties. During the first two decades of statehood, the scope of government activity necessitated providing housing for services such as education, corrections, and health. About the same time many government leaders, educators, businessmen, and artists began to advocate architectural styles based on local traditions using modern technology. University of New Mexico President William Tight convinced the University's Board of Regents to adopt what has become known as the Spanish-Pueblo Revival style for the University campus. Other government-sponsored buildings quickly followed in the Spanish-Pueblo style as well as the Territorial style. The beginnings of tourism and the influx of artists to the state made both the Spanish-Pueblo and Territorial styles popular aesthetically and economically.



New Deal projects changed the face of New Mexico. Conchas Dam was the largest Depression-era construction project in the state.

With increased prosperity following World War II, many towns and rural areas of the state began to modernize. Commercial main street buildings were given false fronts or lost their fronts entirely in favor of new elevations. Suburbs burgeoned with new housing developments such as Casa Solana in Santa Fe and Monte Vista and College View in north-central Albuquerque. More recently, increased development pressures and heritage tourism have prompted many New Mexico communities to create ordinances to protect their historic resources. Additionally, since the Territorial Period the state's ethnic diversity has shifted from a Spanish-Hispanic to an Euro-American majority. Recently, New Mexico has been host to Middle Eastern and Asian groups displaced by political and economic hardships abroad, resulting in new architectural buildings reminiscent of their former countries.

Tourism and New Mexico's place in history have amplified recognition of the state's historic roads, including Route 66, the Santa Fe Trail and El Camino Real. Many buildings, districts, structures, landscapes, and sites from all significant historical periods remain, giving the state a singular identity that continues to play an important role in its economy. In spite of the demographic and economic expansion that New Mexico has experienced in the last 50 years, native and traditional cultures and places continue to enrich the state.

Preservation Partners

New Mexico State Agencies

Department of Cultural Affairs
407 Galisteo Street, Suite 260
Santa Fe, NM 87501
505-827-6364
www.newmexicoculture.org

Office of the State Historian
State Records Center & Archives
1205 Camino Carlos Rey
Santa Fe, NM 87507
505-476-7998
www.newmexicohistory.org

New Mexico Main Street
Economic Development Department
1100 St. Francis Drive
Santa Fe, NM 87503
505-827-0200
www.gonm.biz

Department of Transportation
1120 Cerrillos Road
Santa Fe, NM, 87504-1149
505-827-5100
www.nmshtd.state.nm.us

Tourism Department
491 Old Santa Fe Trail
Santa Fe, NM 87503
505-827-7400
800-545-2070
www.newmexico.org

Office of Indian Affairs
Wendell Chino Building
Second Floor
1220 South St. Francis Drive
Santa Fe, NM 87505
505-476-1600
www.iad.state.nm.us

State Land Office
310 Old Santa Fe Trail
Santa Fe, NM 87501
505-827-5760
www.nmstatelands.org

Energy, Minerals and
Natural Resources
New Mexico State Parks
1220 South St. Francis Drive
P.O. Box 1147
Santa Fe, NM 87504
505-476-3355
888-667-2757
www.emnrd.state.nm.us

Department of Finance
and Administration
407 Galisteo Street, Suite 166
Santa Fe, NM 87501
505-827-3681
www.dfacfd.state.nm.us

Department of Veterans Services
P.O. Box 2324
Santa Fe, NM 87504-2324
505-827-6300
www.dvs.state.nm.us

New Mexico State Attorney General
408 Galisteo Street
Santa Fe, NM 87501
505-827-6000
www.ago.state.nm.us

New Mexico Film Office
418 Montezuma Avenue
Santa Fe, NM 87501
505-827-9810
800-545-9871
www.nmfilm.com

Tribal Preservation

Pueblo of Acoma
P.O. Box 309
Acoma, NM 87034
505-552-6604

Pueblo of Cochiti
P.O. Box 70
Cochiti Pueblo, NM 87072
505-465-2244

Pueblo of Isleta
P.O. Box 1270
Isleta Pueblo, NM 87022
505-869-3111

Pueblo of Jemez
P.O. Box 100
Jemez Pueblo, NM 87024
505-834-7359

Pueblo of Laguna
P.O. Box 194
Laguna Pueblo, NM 87026
505-552-6654

Pueblo of Nambe
Route 1, Box 117-BB
Santa Fe, NM 87506
505-455-2036

Pueblo of Ohkay Owinge
P.O. Box 1099
San Juan Pueblo, NM 87566
505-852-4400

Pueblo of Picuris
P.O. Box 127
Penasco, NM 87553
505-587-2519

Pueblo of Pojoaque
78 Cities of Gold Road
Santa Fe, NM 87506
505-455-3334

Pueblo of Sandia
PO Box 6008
Bernalillo, NM 87004
505-867-3317

Pueblo of San Felipe
PO Box 4339
San Felipe Pueblo, NM 87001
505-867-3381

Pueblo of San Ildefonso
Route 5, Box 315-A
Santa Fe, NM 87506
505-455-2273

Pueblo of Santa Ana
2 Dove Road
Santa Ana Pueblo, NM 87004
505-867-3301

Pueblo of Santa Clara
P.O. Box 580
Española, NM 87532
505-753-7330

Pueblo of Santo Domingo
P.O. Box 99
Santo Domingo Pueblo, NM 87052
505-465-2214

Pueblo of Taos
P.O. Box 1846
Taos, NM 87571
505-758-9593

Pueblo of Tesuque
Route 42, Box 360-T
Santa Fe, NM 87506
505-983-2667

Pueblo of Zia
135 Capitol Square Dr.
Zia Pueblo, NM 87053-6013
505-867-3304

Pueblo of Zuni (THPO)
P.O. Box 339
Zuni, NM 87327
505-782-7022

Jicarilla Apache
P.O. Box 507
Dulce, NM 87528
505-759-3242

Mescalero Apache (THPO)
P.O. Box 227
Mescalero, NM 88340
505-464-4494

Navajo Nation (THPO)
P.O. Box 9000
Window Rock, AZ 86515
928-871-6352

New Mexico Not-for-Profits

New Mexico Heritage Preservation
Alliance
P.O. Box 2490
Santa Fe, NM 87504-2490
505-989-7745
www.nmheritage.org

Cornerstones
Community Partnerships
227 Otero Street
Santa Fe, NM 87501
505-982-9521
www.cstones.org

Historic Santa Fe Foundation
545 Canyon Road
PO Box 2535
Santa Fe NM 87504-2535
505-983-2567
www.historicsantafe.com

Directory

Historical Society of New Mexico
P.O. Box 1912
Santa Fe, NM 87504
www.hsnm.org

New Mexico
Archaeological Council
P.O. Box 25691
Albuquerque, NM 87125

The Archaeological Conservancy
5301 Central Ave. NE, Suite 902
Albuquerque, NM 87108-1517
505-266-1540
www.americanarchaeology.com

New Mexico Chapter of the
American Planning Association
P.O. Box 25352
Albuquerque, NM 87125
www.nmapa.org

Archaeological Society
of New Mexico
P.O. Box 3485
Albuquerque, NM 87190
505-255-7719

Las Vegas Citizens Committee for
Historic Preservation
127 Bridge Street
P.O. Box 728
Las Vegas, NM 87701
www.lasvegasmcchp.com

American Institute of
Architects/New Mexico
2414 Central Ave. SE, Suite 130,
Albuquerque, NM 87106
505-260-0571

New Mexico Route 66 Association
1415 Central NE
Albuquerque, NM 87106
www.rt66nm.org

New Mexico Humanities Council
MSC06 3570
1 University of New Mexico
Albuquerque, NM 87131-0001
505-277-3705
www.nmhum.org

Certified Local Governments

City of Albuquerque
600 2nd St. NW
Albuquerque, NM 87103
505-924-3860
www.cabq.gov/planning

Village of Columbus
P.O. Box 350
Columbus, NM 88029-0350
505-531-2663

City of Deming
309 South Gold Avenue
P.O. Box 706
Deming, NM 88031
Phone: 505-546-8848
www.cityofdeming.org

City of Las Vegas
P.O. Box 160
Las Vegas, NM 87701
505-454-1401
www.lasvegasmn.gov

County of Lincoln
P.O. Box 711
Carrizozo, NM 88301

City of Santa Fe
P.O. Box 909
Santa Fe, NM 87504-0909
www.santafenm.gov

Town of Silver City
P.O. Box 1188
Silver City, NM 88062
www.townofsilvercity.org

Town of Taos
400 Camino de la Placita
Taos, NM 87571
www.taosgov.com

Regional Preservation

National Trust for Historic
Preservation
Southwest Regional Office
500 Main Street, Suite 1030
Fort Worth, TX 76102
817-332-4398
www.nationaltrust.org/southwest

National Park Service –
Southwest Regional Office
P.O. Box 728
Santa Fe, NM 87504
505-988-6100
www.nps.gov

Bureau of Land Management
New Mexico State Office
1474 Rodeo Road
Santa Fe, NM 87505
505-438-7400
www.nm.blm.gov

USDA Forest Service
Southwestern Region
333 Broadway SE
Albuquerque, NM 87102
505-842-3292
www.fs.fed.us/r3

U.S. Green Building Council– New
Mexico Chapter
Leadership in Energy
Efficiency & Design
P.O. Box 25771
Albuquerque, NM 87125
www.chapters.usgbc.org/newmexico

U.S. Army Corp of Engineers
Albuquerque District
4101 Jefferson Plaza, NE
Albuquerque, NM 87109
www.spa.usace.army.mil

National Preservation

Advisory Council for
Historic Preservation
1100 Pennsylvania Ave. NW
Suite 809
Washington, D.C. 20004
202-606-8503
www.achp.gov

National Conference of State
Historic Preservation Officers
444 N. Capitol St. NW, Suite 342
Washington, D.C. 20001-1512
202-624-5465
www.ncshpo.org

National Park Service
1849 C St. NW
Washington, D.C. 20240
202-208-6953
www.nps.gov

National Trust for Historic
Preservation
1785 Massachusetts Ave. NW
Washington, D.C. 20036
800-944-6847
www.nationaltrust.org

Preservation Action
1350 Connecticut Ave. NW,
Suite 401
Washington, D.C. 20036
202-659-0915
www.preservationaction.org

US/ICOMOS
401 F Street, NW, Suite 331
Washington, DC 20001-2728
202-842-1866
www.icomos.org/usicomos

U.S. Dept. of the Interior
1849 C St. NW
Washington, D.C. 20240
202-208-3100
www.doi.gov

U.S. Dept. of Agriculture
Forest Service
P.O. Box 96090
Washington, D.C. 20090-6090
www.fs.fed.us

Bureau of Land Management
1849 C St NW
Washington, DC 20240
www.blm.gov/nhp/index.htm

U.S. Department of Defense
1000 Defense Pentagon
Washington, DC 20301
www.defenselink.mil

U.S. Department of Energy
1000 Independence Ave., SW
Washington, DC 20585
www.energy.gov

Outreach Partners

Heritage Preservation Month Poster & Archaeology Fair Sponsors—

sponsorships are through the New Mexico Heritage Preservation Alliance in care of the Historic Preservation Division, and fund outreach throughout the year.

Corporate Sponsors

AARP

Albuquerque Isotopes

New Mexico Military Institute Legacy Campaign

Yates Petroleum Corp

Poster Sponsors

Agolis Energy

Kirtland Air Force Base

The Boles Family

Bureau of Land Management

Carrizozo Heritage Museum

Chicago Community Foundation

Cornerstones Community Partnerships

In Memory of Margaret Parsons Drake

El Morro National Monument

Environmental Management, Kirtland AFB

Environmental Resources Management

Friends of Bandelier

Friends of the Cumbres and Toltec Scenic Railroad, Inc.

The Hartman + Majewski Design Group

GSA-Greater Southwest Region

Great American Station Foundation

Heritage Partnerships Program-Intermountain Region, NPS

The Historic Plaza Hotel of Las Vegas

Hotel St. Francis, of Santa Fe

Human Systems Research, Inc.

La Posada of Santa Fé Resort & Spa

Las Placitas Association

Lopez Garcia Group

Louis Berger Group, of East Orange, New Jersey

Village of Los Lunas

Marathon Oil Company

Marron and Associates, Inc.

Dr. Timothy Maxwell

Manzano Conservation Foundation

Menaul School of Albuquerque

Will B. Murphey

Museum of New Mexico Foundation

Museum of New Mexico — Office of Archaeological Studies

National Park Service Route 66 Corridor Preservation Program — National Trail System

New Mexico Archaeological Council,

Honoring Susana R. Katz

New Mexico Department of Transportation

New Mexico Heritage Preservation Alliance

New Mexico State Monuments

New Mexico Republicans for Environmental Protection

New Mexico State Library

Palace Hotel, of Silver City

Paradigm & Company

PBS&J, of Austin, Texas

Parsons Brinkerhoff Quad & Douglas, Inc.

Quivira Research Center Associates

Reconnecting America

Marcella G. Romero

Starling Printing

SRP

Katherine Slick

SWCA, Inc.

www.swanet.org

Taschek Environmental Consulting, LLC

TRC Mariah Associates, Inc.

U.S. Army Corps of Engineers, Albuquerque District

U.S. General Services Administration Greater Southwest Region

Valley Improvement Association

Van Citters: Historic Preservation, LLC

In Memory of Cheryl Wase

Yates Petroleum Corp.

XTO Energy

Zia Engineering and Environmental Consultants

Historic Preservation Division & Cultural Properties Review Committee

State Historic Preservation Officer

Katherine Slick, Director

Communication & Education Bureau

Sam Cata, Deputy Director, Tribal Liaison & Manager

Glenna Dean, State Archaeologist

Tom Drake, Publications & PR

John Murphey, Register Coordinator

Phil Young, SiteWatch Coordinator

Services Bureau

Jan Biella, Deputy SHPO & Manager

Michelle Ensey, Permits

Shalie Gasper, CLG & Grants

Robyn Powell, Tax Credits

Dorothy Victor, Loans & Reviews

Planning Bureau

Lisa Meyer, Manager

Larry Benallie, Archaeology Reviews

Pilar Cannizzaro, Architecture Reviews

Harvey Kaplan, Tax Credits & Reviews

Rebecca Procter, Archaeology Reviews

Knowledge & Information Bureau

Bill Doleman, Manager

Leslie Bischoff, Information Tech

Tonya Fallis, Archaeologist

Scott Geister, Archaeologist

Lou Haecker, Archaeologist

Cordelia Snow, Archaeologist

Steve Townsend, Archaeologist

Bob Turner, Information Tech

Anna La Bauve, Archaeologist

Administrative Bureau

Patrick Lucero, Finance Manager

Patsy Lucero, Office Clerk

Dorothy Moore, Administrative Asst

Melinda Wheeler, Finance

Deborah Davis, Secretary

CPRC

Dr. Estevan Rael Gálvez, Chairman

Craig Hoopes, Architect

Clarence Fielder, Historian

Dr. Beth O'Leary, Archaeologist

Dr. Signa Larralde, Archaeologist

Mark Mitchell, Tribal Representative

Dr. Phillip Shelley, Archaeology

Mac Watson, Architecture

Nancy Meem Wirth, Citizen Member

Bibliography

Ackerly, Neal W.

- 1995 *Contexts and Management Strategies for Historic Acequia Systems in New Mexico*. Santa Fe: Office of Cultural Affairs, N.M. Historic Preservation Division and Dos Rios Consultants.
- 1996 *A Review of the Historic Significance of and Management Recommendations for Preserving New Mexico's Acequia Systems*. Santa Fe: Office of Cultural Affairs, N.M. Historic Preservation Division and Dos Rios Consultants.

Berman, Mary Jane

- 1980 *A Cultural Resources Overview of the Socorro Area, New Mexico*. Santa Fe and Albuquerque: Bureau of Land Management and USDA Forest Service.

Bunting, Bainbridge

- 1976 *Early Architecture in New Mexico*. Albuquerque: University of New Mexico Press.

Bureau of Business & Economic Research, University of New Mexico

- 2001 *Census 2000 P.L. 94-171 Redistricting Data* (online). Available from World Wide Web: (www.unm.edu/~bber)

Cordell, Linda S.

- 1979 *A Cultural Overview of the Middle Rio Grande Valley, New Mexico*. Albuquerque: Bureau of Land Management.

Eidenbach, Pete and Beth Morgan

- 1994 *Homes on the Range, Oral Recollections of Family Ranch Life on the U.S. Army White Sands Missile Range, N.M.* Santa Fe: Office of Cultural Affairs, N.M. Historic Preservation Division and Human Systems Research.

Gunnerson, James H.

- 1987 *Archaeology of the High Plains*. Denver: USDA Forest Service.

Hicks, Gregory T.

- 1993 *Overview of New Mexico Agricultural History: Farms and Ranches*. Santa Fe: Office of Cultural Affairs, N.M. Historic Preservation Division and Hicks and Assoc.
- 1993 *New Mexico Farm and Ranch Project*. Santa Fe: Office of Cultural Affairs, N.M. Historic Preservation Division, and Hicks and Associates.

Jenkins, Myra Ellen and Albert H. Schroeder

- 1974 *A Brief History of New Mexico*. Albuquerque: University of New Mexico Press.

Kammer, David

- 1992 *The Historic and Architectural Resources of Route 66 Through New Mexico*. Santa Fe: Office of Cultural Affairs, N.M. Historic Preservation Division.
- 1994 *The Historic and Architectural Resources of the New Deal in New Mexico*. Santa Fe: Office of Cultural Affairs, N.M. Historic Preservation Division.

Katz, Susanna and Paul Katz, editors

- 2001 *The Archaeological Record of Southern New Mexico: Sites and Sequences of Prehistory*. Santa Fe: Office of Cultural Affairs, N.M. Historic Preservation Division.

Marshall, Michael P. and Henry J. Walt

- 1984 *Rio Abajo: Prehistory and History of a Rio Grande Province*. Santa Fe: Office of Cultural Affairs, N.M. Historic Preservation Division.

Marshall, Michael P., John R. Stein, Richard W. Loose, and Judith E. Novotony

- 1981 *Anasazi Communities of the San Juan Basin*. Santa Fe: Office of Cultural Affairs, N.M. Historic Preservation Division.

Marci L. Riskin

- 2000 *New Mexico's Historic Places: A Guide to National and State Register Sites*. Santa Fe: Ocean Tree Books in association with the Office of Cultural Affairs, N.M. Historic Preservation Division.

Merlan, Thomas and James P. Bieg

- 1996 *The Power to Preserve*. Santa Fe: Office of Cultural Affairs, N.M. Historic Preservation Division.

Powers, Margaret A. and Byron P. Johnson

- 1987 *Defensive Sites of the Dinétah*. Santa Fe: N.M. Bureau of Land Management Cultural Resources Series No. 2.

Pratt, Boyd C., Charles D. Biebel and Dan Scurlock

- 1988 *Trials, Rails, Roads: The Central New Mexico East-West Corridor Regional Overview*. Santa Fe: Office of Cultural Affairs, N.M. Historic Preservation Division.
- 1990 *The Northwest New Mexico Regional Overview* (2 volumes). Santa Fe: Office of Cultural Affairs, N.M. Historic Preservation Division.
- 1993 *New Mexico Historic Contexts*. Santa Fe: Office of Cultural Affairs, N.M. Historic Preservation Division.

Bibliography

Pratt, Boyd C. and Chris Wilson

1991 *The North Central Regional Overview*. Santa Fe: Office of Cultural Affairs, N.M. Historic Preservation Division.

Reed, Paul F., Editor

2006 *Thirty-Five Years of Archaeological Research at Salmon Ruins, New Mexico* (3 volumes). Santa Fe: Department of Cultural Affairs, N.M. Historic Preservation Division and Center for Desert Archaeology.

Rypkema, Donovan

1994 *The Economics of Historic Preservation*. Washington, D.C.: National Trust for Historic Preservation.

Spears, Beverly

1993 *Historic Railroad Structures of Western New Mexico*. Santa Fe: Office of Cultural Affairs, N.M. Historic Preservation Division and Spears Architects.

1995 *Clayton, Springer, & Wagon Mound: An Architectural Survey*. Santa Fe: Office of Cultural Affairs, N.M. Historic Preservation Division and Spears Architects.

State of New Mexico

1995 *New Mexico Cultural Resources Impact Assessment*. Santa Fe: Office of Cultural Affairs.

1998 *New Mexico Historic Preservation: A Plan for the Year 2001*. Santa Fe: Office of Cultural Affairs, N.M. Historic Preservation Division.

2000 *Weaving Cultural Tourism, the Fabric to Life in New Mexico*. Santa Fe: Office of Cultural Affairs and Department of Tourism.

2001 *New Mexico Cultural Properties Inventory Manual*. Santa Fe: Office of Cultural Affairs, N.M. Historic Preservation Division, and Crocker, Ltd.

2001 *New Mexico Historic Preservation: A Plan for 2002-2006*. Santa Fe: Office of Cultural Affairs, N.M. Historic Preservation Division.

2006 *Executive Order 2006-001: State of New Mexico Energy Efficient Green Building Standards for State Buildings*. Santa Fe: Office of the Governor.

Stuart, David E. and Rory P. Gauthier

1981 *Prehistoric New Mexico: Background for Survey*. Santa Fe: Office of Cultural Affairs, N.M. Historic Preservation Division.

Tainter, Joseph A. and Frances Levine

1987 *Cultural Resource Overview: Central New Mexico*. Santa Fe and Albuquerque: Bureau of Land Management and U.S.D.A. Forest Service.

Wilson, Chris

1995 *Nob Hill Historic Building Inventory Final Report*. Santa Fe: Office of Cultural Affairs, N.M. Historic Preservation Division and City of Albuquerque.

T e c h n i c a l

Green Building Alliance

2006 *Greening of Historic Properties National Summit White Paper: Pinpointing Strategies and Tactics for Integrating Green Building Technologies into Historic Structures*. Pittsburgh, PA: Pittsburgh History and Landmarks Foundation and Green Building Alliance

Lee, Antoinette J. and Linda F. McClelland

1999 *National Register Bulletin: How to Complete the National Register Multiple Property Documentation Form*. Washington, D.C.: U.S. Department of the Interior, National Park Service, National Register, History and Education

McClelland, Linda F., J. Timothy Keller, Genevieve P. Keller, and Robert Z. Melnick

1999 *National Register Bulletin: Guidelines for Evaluating and Documenting Rural Historic Landscapes*. U.S. Department of the Interior, National Park Service, National Register, History and Education.

Parker, Patricia and Thomas E. King

1994 *National Register Bulletin 38: Guidelines for Evaluating and Documenting Traditional Cultural Properties*. Washington, D.C.: U.S. Dept. of the Interior, National Park Service, Interagency Resources Division.

Sherfy, Marcella and W. Ray Luce

1979 *Guidelines for Evaluating and Nominating Properties that Have Achieved Significance Within the Past Fifty Years*. Washington, D.C.: U.S. Dept. of the Interior, National Park Service, National Register of Historic Places.

Thomson, Ron and Marilyn Harper

2000 *National Register Bulletin: Telling the Stories: Planning Effective Interpretive Programs for Properties Listed in the National Register of Historic Places*. Washington, D.C.: U.S. Department of the Interior, National Park Service, History and Education.

U. S. Department of Commerce, Bureau of the Census

2006 *State and County QuickFacts* (online). Available from World Wide Web: (www.quickfacts.census.gov)

Front Cover

Eanger Irving Couse House. A banco on the east portal of the home and studio of Taos Society of Artists co-founder Eanger Irving Couse. His home and studio — along with the adjacent studio of Joseph Henry Sharpe — are considered the best surviving representations of the ca. 1915 dwellings that artists modified and built when they migrated primarily from the eastern U.S. and Europe to make Taos and its blend of Native and Hispanic cultures the focus of their work. Couse especially was known for his sympathetic portrayal of Native Americans which contrasted from earlier, more violent depictions. The Couse House and Studio and the studio of Sharpe were listed to the State and National Register in 2004.

Back Cover

Three Corn Ruin. Perched high atop an isolated rock outcropping hundreds of feet above the floor of Gobernador Canyon, Three Corn Ruin is a Navajo pueblito. A term coined in the 1960s for the structures built largely in the 1700s by the Navajo, pueblitos resemble the much grander structures and cities built centuries before by Ancestral Puebloans.

Held in trust by the New Mexico State Land Office, the three structures that form Three Corn Ruin take their name from three petroglyphs depicting corn that are found at the base of the massive rock upon which the structures were built. Fully exposed to the elements and in plain view of passersby, the pueblito suffered impacts from random visits, vandalism, and pot hunting.

Plans to preserve the ruins date back to 1999 when HPD provided a grant to develop a stabilization assessment. In November 2004, the State Land Office issued a request for proposals to begin stabilizing Three Corn Ruin.

The San Juan County Museum Association and Division of Conservation Archaeology submitted an application to HPD for a state land excavation permit. HPD reviewed the stabilization plan and a permit and easement were approved by the CPRC. Work completed in spring 2005 has been featured in national publications, and limited tours are available during Heritage Preservation Month.

This publication was financed with federal funds from the U.S. Department of the Interior, National Park Service and with state funds administered by HPD. The contents and opinions do not necessarily reflect the views or policies of the Department of the Interior. Under Title VI of the Civil Rights Act of 1964, Section 504 of the Rehabilitation Act of 1973, and the Age Discrimination Act of 1975, as amended, the U.S. Department of the Interior prohibits discrimination on the basis of race, color, national origin, disability or age in its federally assisted programs. If you believe you have been discriminated against in any program, activity, or facility as described above, or if you desire further information, please write to: Office of Equal Opportunity, National Park Service, 1849 C Street N.W., Washington, D.C. 20240.

***Preserving the Enchantment: A Plan for New Mexico, 2007 – 2011* was written by Katherine Slick, Jan Biella, Shalie Gasper and Tom Drake with editing provided by HPD staff. The publication was designed by Tom Drake. Front cover photo by Robyn Powell. Three Corn Ruin photos by David Eck.**



New Mexico Historic Preservation Division

Department of Cultural Affairs
407 Galisteo Street, Suite 236
Santa Fe, New Mexico 87501

www.nmhistoricpreservation.org

505-827-6320